

# DCA's COMMUNITY VISIONING SOFTWARE

Model Task Force  
Land Use Subcommittee  
January 10, 2006



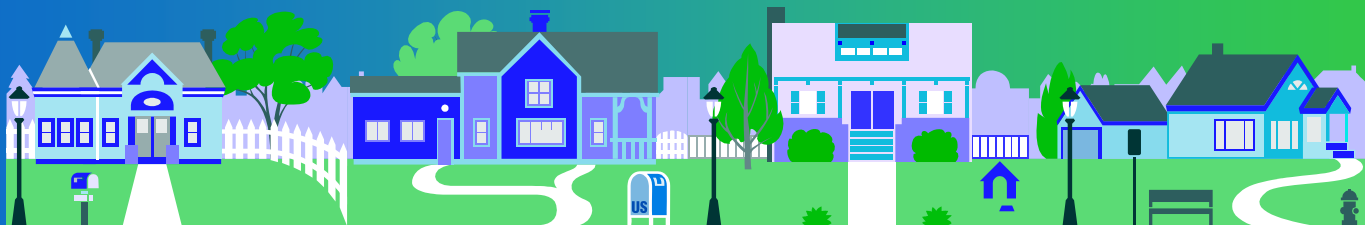
Diane Quigley, AICP  
Transportation Planner  
Department of Community Affairs

# Senate Bill 360

- 163.3177 (13) and (14), F.S. encourage local governments to adopt a community vision and a 10-year urban service boundary
- Local governments implementing these provisions are granted regulatory relief from state review on future land use map amendments within the designated 10-year urban service boundary

# What is Community Visioning?

- A structured way for citizens to meet and discuss important issues affecting their community
- A shared concept for growth and community development
- Visual representations depicting desired land use patterns and community character during a 10-year time frame



# Community Visioning Requirements

- A local government must hold at least one public workshop
- A local government also must hold at least two public meetings, with at least one of those meetings before the local planning agency



# Community Visioning Requirements

- The workshops and public meetings must address at least 5 of the following 9 topics and discuss strategies for addressing each topic:
  1. Future growth using BEBR population projections;
  2. Priorities for economic development;
  3. Preservation of open space, environmentally sensitive lands, and agricultural lands;

# Community Visioning Requirements

- Areas and standards for mixed-use development;
- Areas and standards for urban development;
- Areas and standards for economic-development opportunities and employment centers;
- Provisions for adequate workforce housing;
- An efficient, interconnected multimodal transportation system; and
- Opportunities to create land use patterns that accommodate the issues listed in number 1-8.

# 10-Year Urban Service Boundary

- An area appropriate for compact, contiguous urban development.
- The area will accommodate the projected population growth.
- The area must be served or planned to be served with adequate public facilities and services.
- The area must be shown on the Future Land Use Map



# Action Plan

- Short Term
  - Promulgate the use of an existing community visioning software application for use by local governments to support local visioning process
- Long Term
  - Develop an integrated software package that can serve multiple community visioning, planning and impact analysis functions

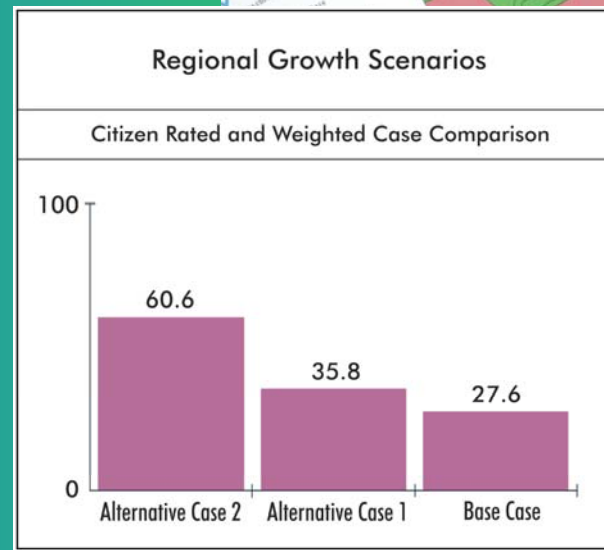
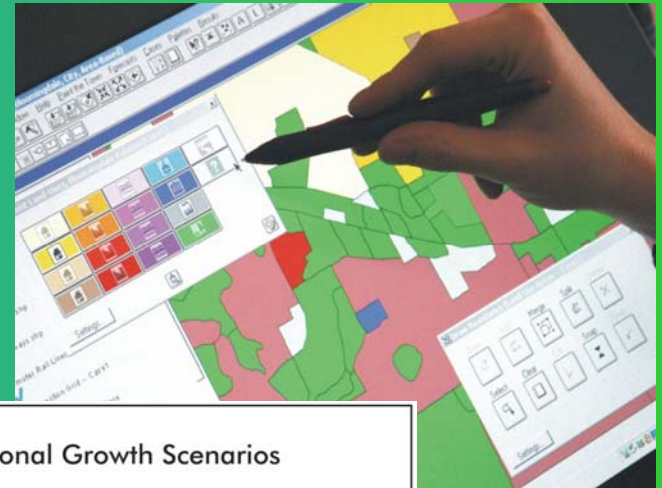


# Action Plan Status

- Defined specifications for the software for consistency with legislation
- Developed and advertised an Invitation to Negotiate
- Contacted nine vendors of existing software packages
- Criterion Planners awarded contract
  - Index/Plan Builder Software

# What is INDEX?

- INDEX is a suite of interactive GIS-based planning support tools that:
  - Enhances the visioning process
  - Provides visual effects (3-D)
  - Compares and evaluates land use scenarios in real time
  - Provides a library of quality indicators
  - Can be scaled for regions or small communities



# INDEX Paint the Region

- Supports regional visioning
  - Large scale - 1 to 2 mile grid system to represent planning areas
- Allocates population and employment based on predefined land use mixes/intensities
- Can be preloaded with available statewide data
- Exports land use scenarios to other tools

## Growth Canvas

Growth is "painted" on a digital canvas of 1-sq.mi. cells that represent the planning area. In two or three-dimensions, the canvas can depict existing conditions with aerial photography, or technical boundaries such as traffic analysis zones, or policy-based areas such as growth suitability delineations.

### Data Items & Sources

Public land survey grid	FGDL
Aerial photography	FGDL
Land-use	FDOR
Employment	MPOs
Road network	FGDL
Natural resources	FGDL

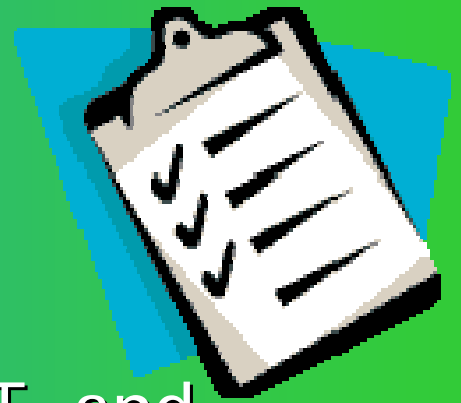


# Contract Tasks



1. Create statewide database on CD
  - FDOT employment data
  - FDGL data library
  - FDOR parcel data
2. Define compatibility requirements with other state tools
  - FSUTMS
  - Fiscal Impact Analysis Model (FIAM)
  - Water Assessment Model (WAM)

# Contract Tasks



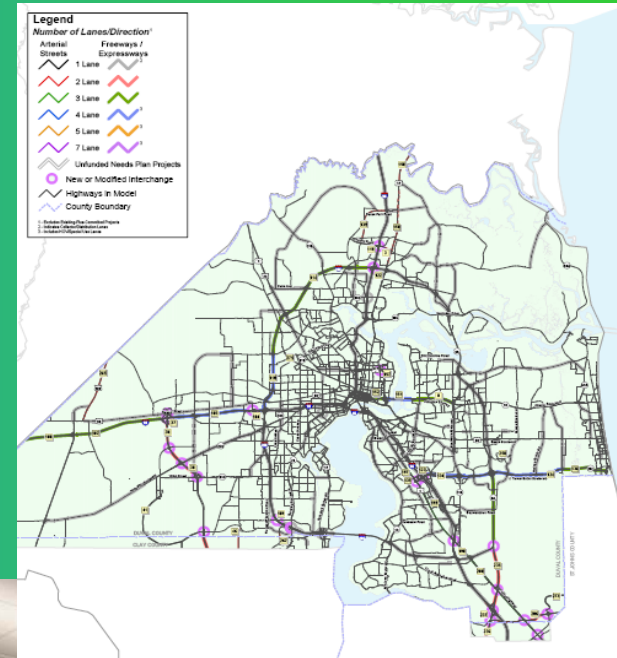
3. Equip, Train, and Assist DCA, FDOT, and DEP with licensed copies of INDEX
4. Equip, Train, and Assist Pilot Communities
  - 4 Regional Planning Councils
  - 6 Local Governments
5. Evaluate Pilots
6. Build a Florida-specific INDEX tool
  - Include stand alone Urban Service Boundary extension

# Contract Schedule

- Data CD February 2006
- State Tools Review January 2006
- Train State Agencies February 2006
- Pilot Communities April 2006
- Evaluate Pilots May 2006
- Build Florida Tool June 2006

# Relationship to MTF and MPOs

- FDOT to be provided INDEX software, training and evaluation
- MPOs integral part of land use visioning scenario development and testing
- Coordinate visioning software development for compatibility with FSUTMS and future enhancements





# Contact Information

- Tim Cannon, GIS Manager
  - 850-922-1789
  - [Tim.Cannon@dca.state.fl.us](mailto:Tim.Cannon@dca.state.fl.us)
- DCA Website
  - <http://dca.state.fl.us/>