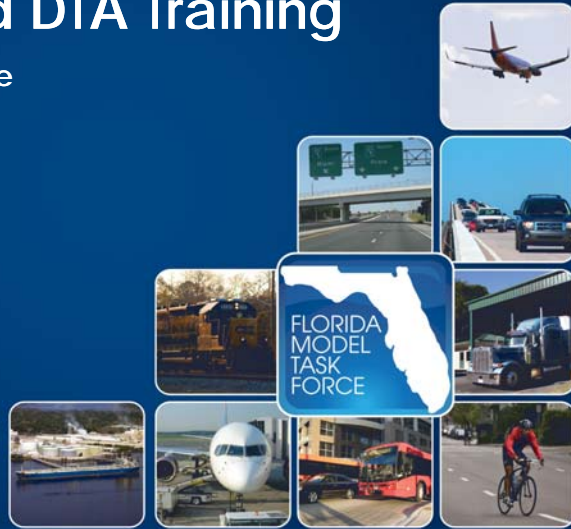


# Advanced Traffic Assignment (ATA) Sub-committee Activities and DTA Training

*presented to*  
MTF ATA Sub-Committee

*presented by*  
Neelam Fatima

Date: June 17, 2013



## Accomplishments

- DTA Research Project
- Workshop on DTA
- Development of ISSTA
- Managed Lane Phase I
- Managed Lane phase II
- Volume Delay Function
- Resolution on DTA support & Training
- Proposal for DTA Training-underway



## ATA Activities



### On-Going Projects

- Managed Lane-Phase 2
- Volume Delay Function Project
- Dynamic Traffic Assignment Training



## ATA Support on DTA



- The Advanced Traffic Assignment (ATA) sub-committee has identified that
- Dynamic Traffic Assignment (DTA) models address transportation issues that may fall beyond the scope of traditional static assignment procedures.



## Next Steps



- Input from ATA members
- Materials & content
- Locations
- Dissemination of information
- ATA will continue to play an active role in support of DTA



## Questions or Comments

