

The logo graphic consists of several overlapping, slanted rectangular shapes in shades of green, blue, and purple, creating a sense of movement and depth.

CAMBRIDGE  
SYSTEMATICS

Think  Forward

# SERPM 8 Project Update

*presented to*  
RTTAC-MS

*presented by*  
Cambridge Systematics, Inc.  
Jay Evans, Marty Milkovits

March 14, 2018

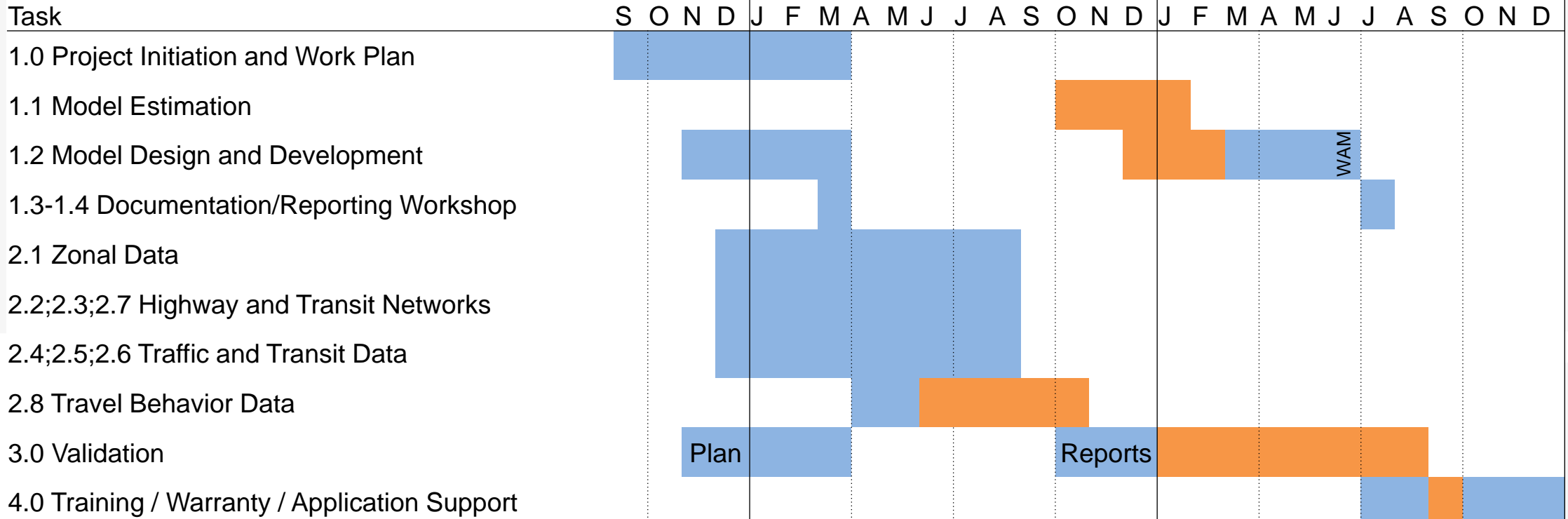
# Outline

---

- Status overview
- Confirm base year networks and SE data completed
- Validation plan recap
- Implementation notes

# Project schedule

## SERPM 8.0 Project Plan



**Critical Path**

*WAM: Windowed Area Model*

*Plan: validation plan development*

*Reports: validation reporting development*

Version: 9/27/2017

# Current status

---

- Input data closure
- SERPM 8 implementation
- Calibration and Validation

# Base year networks and SE data completed\*

---

## ➤ Miami-Dade

- » Revised 2015 employment targets received for ~50 zones
- » Employment segmentation will follow TPO 2010 distribution
- » Employment in non-updated zones will be normalized to maintain county-level control totals
- » \*Pending parking cost review and updates

## ➤ Broward

- » \*Pending revised HH and Population targets from county

## ➤ Palm Beach

- » \*Pending revised 2015 MAZ-level employment totals

# Questions on status?

---

# Validation process recap

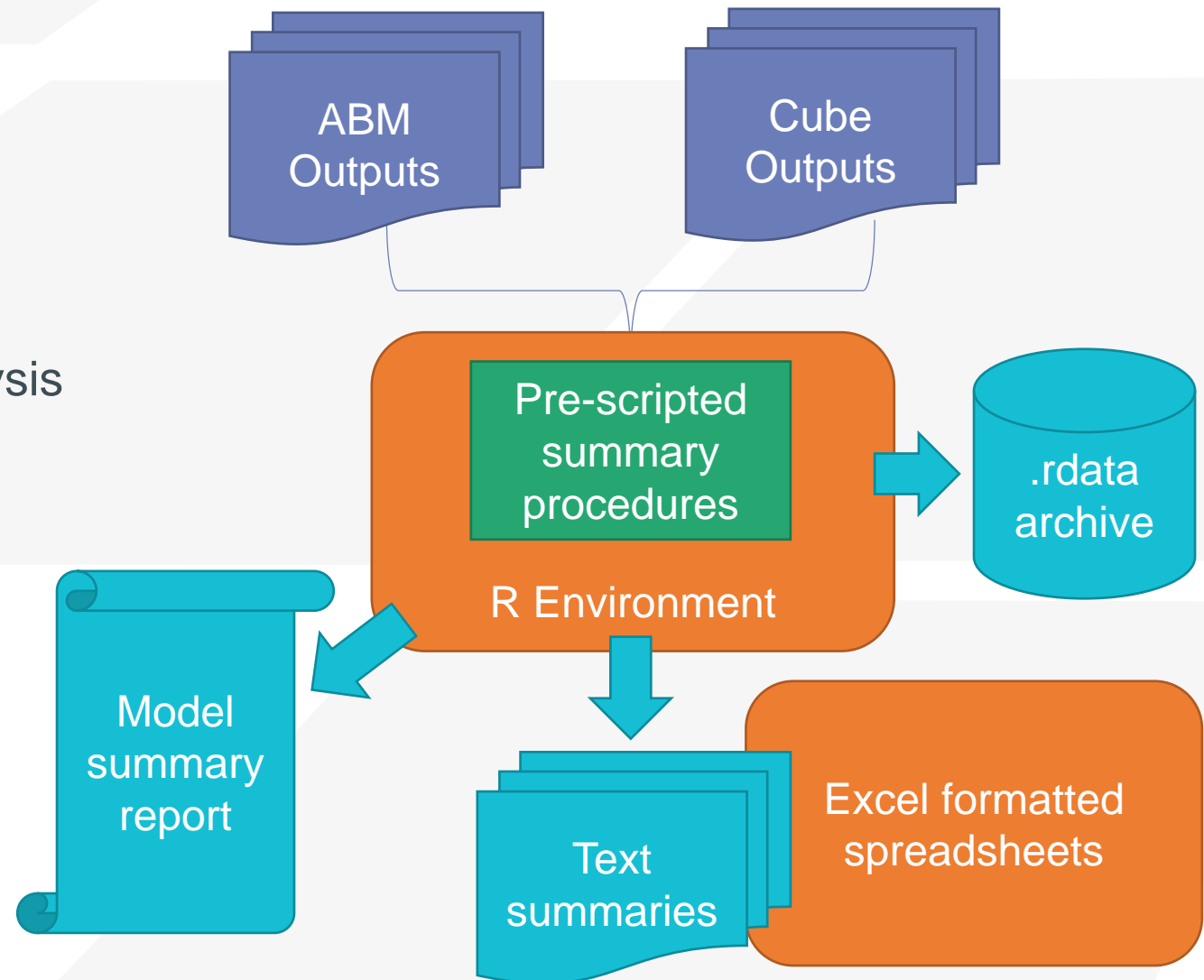
---

- Data compilation
- Single-pass calibration
  - » Input data
  - » Non-ABM
  - » ABM components (resident and visitor)
  - » System (highway and transit) level
- Full feed-back validation
- Backcast
- Sensitivity testing

# Validation and scenario report mechanism

## ➤ Reporting process

- » Summarize data using R
  - Export summaries to excel for manipulation
  - Save .rdata file for further analysis
- » Run summary – html or pdf
- » Detailed reports in Excel





# Questions on validation?

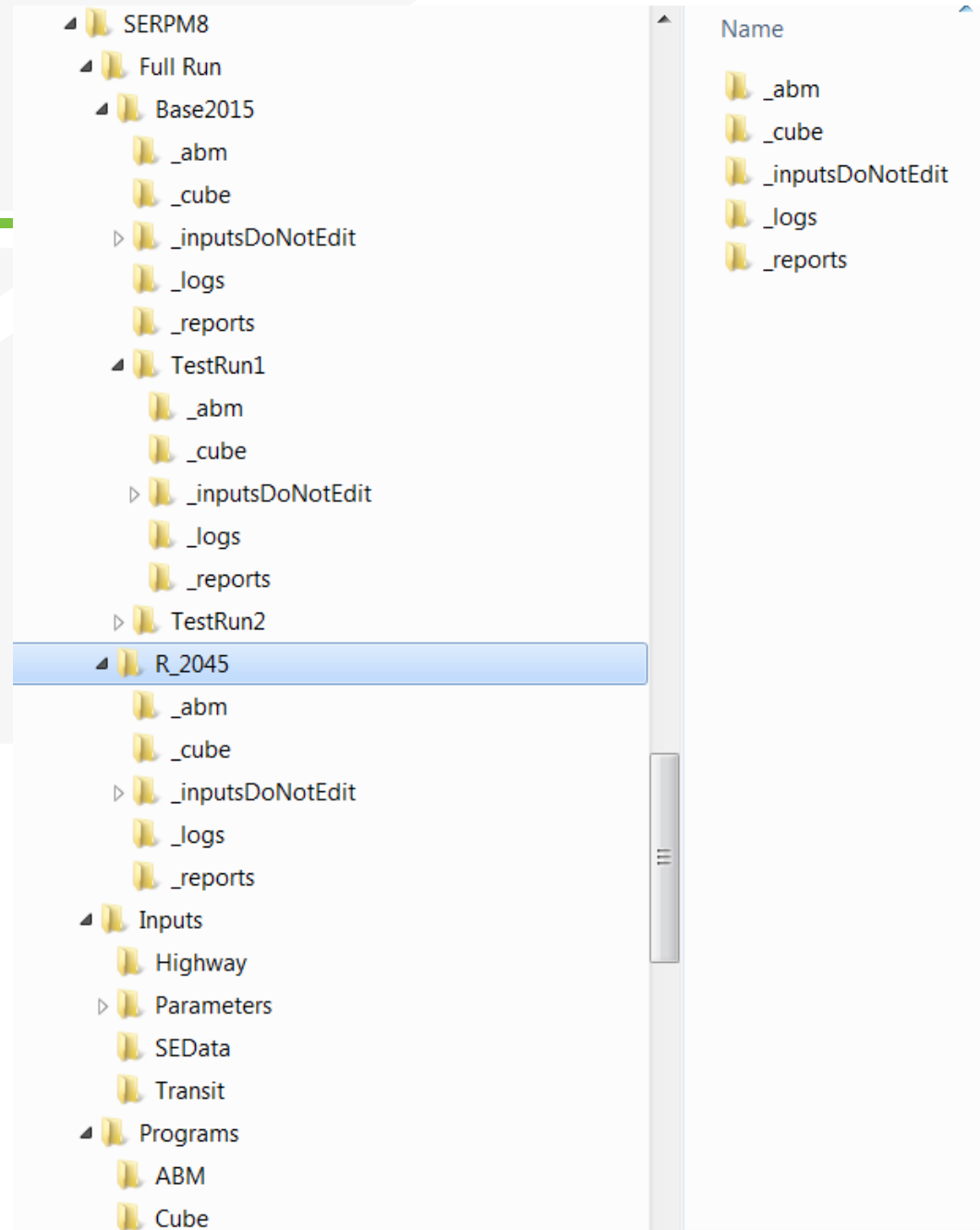
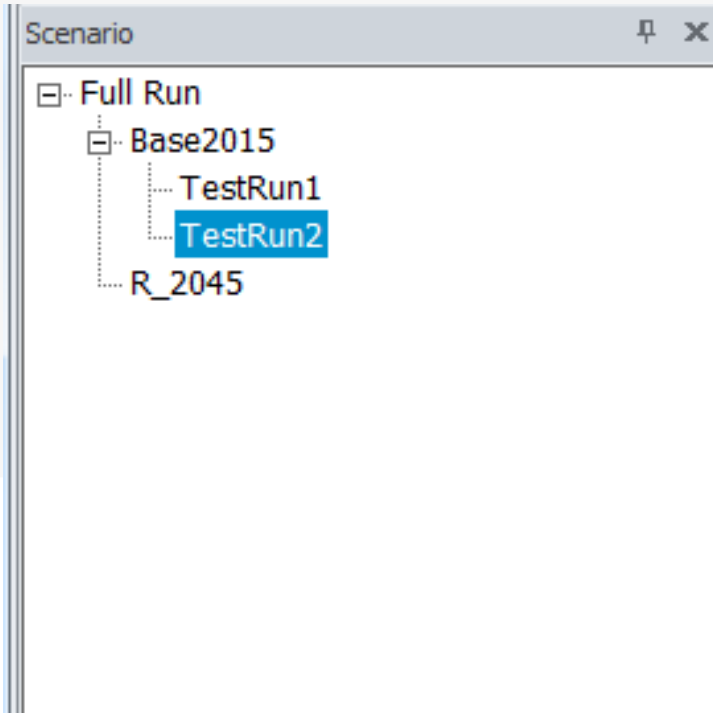
---

# Implementation notes

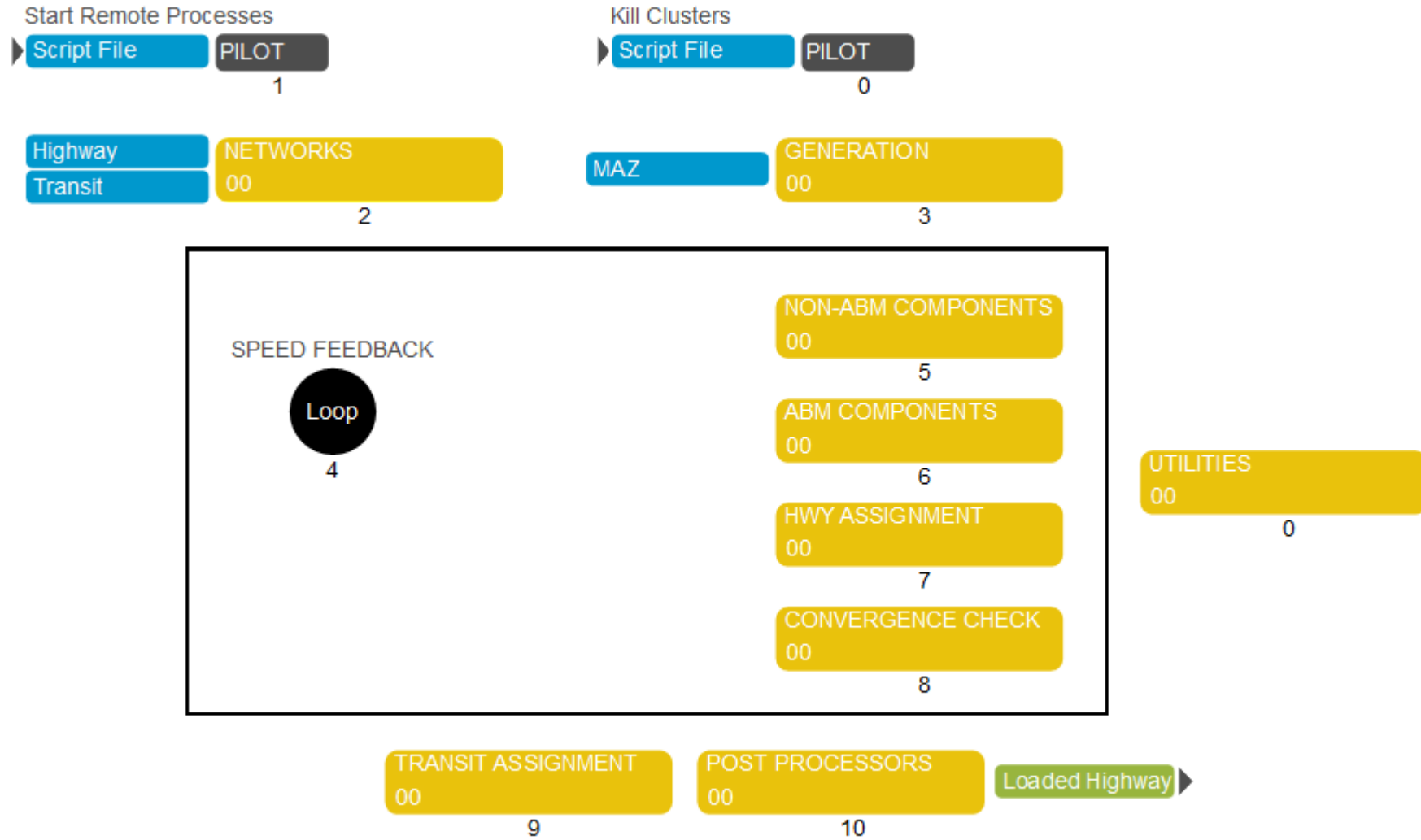
---

- Cube catalog
  - » Refactor
  - » Transit path building and assignment
  - » Highway assignment
- ABM software
  - » Mode choice structures
  - » Future mobility support
  - » Other re-estimated components
  - » Refactor

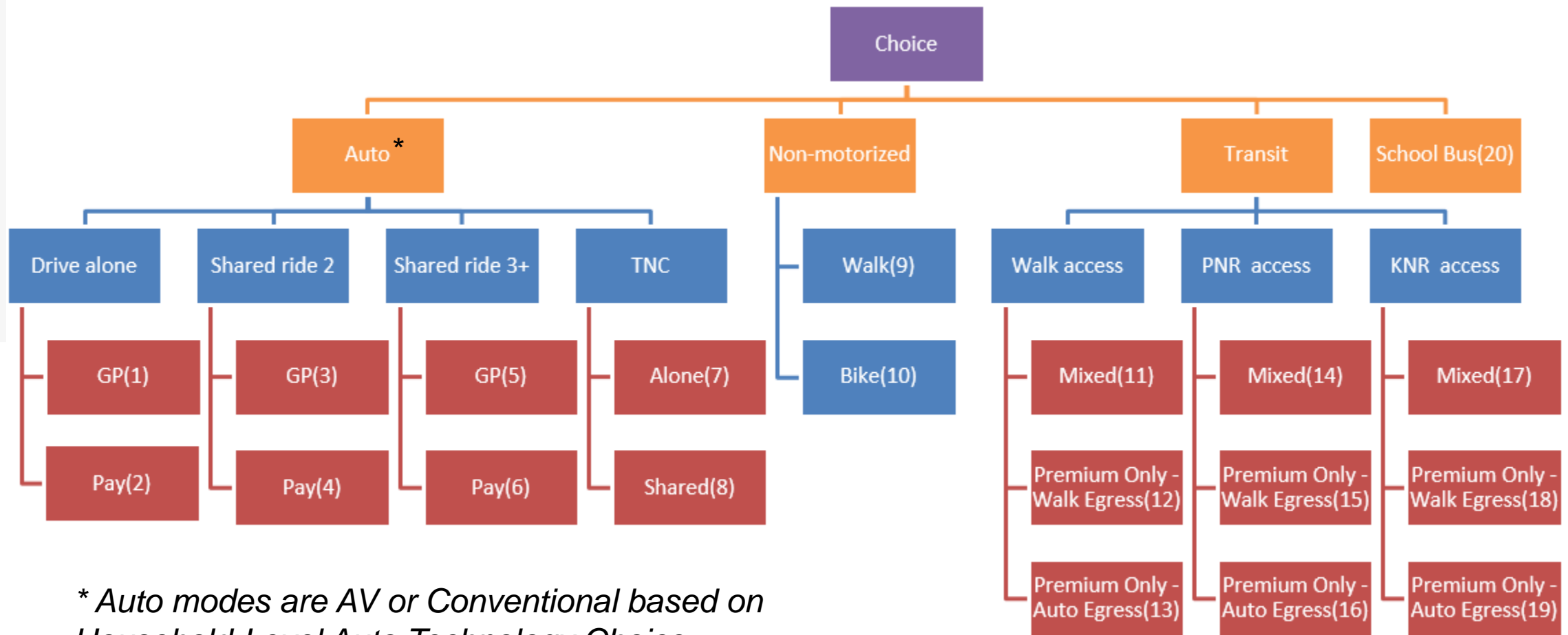
# Folder structure



# Application manager



# SERPMP8 mode choice structure with TNC



\* Auto modes are AV or Conventional based on Household-Level Auto Technology Choice

# Questions on implementation?

---