

The logo graphic consists of several overlapping, slanted rectangular shapes in shades of green, blue, and purple, arranged in a way that suggests movement or a stylized 'C' shape.

CAMBRIDGE
SYSTEMATICS

Think  Forward

SERPM 8 Project Update

presented to
RTTAC-MS

presented by
Cambridge Systematics, Inc.
Jay Evans, Marty Milkovits

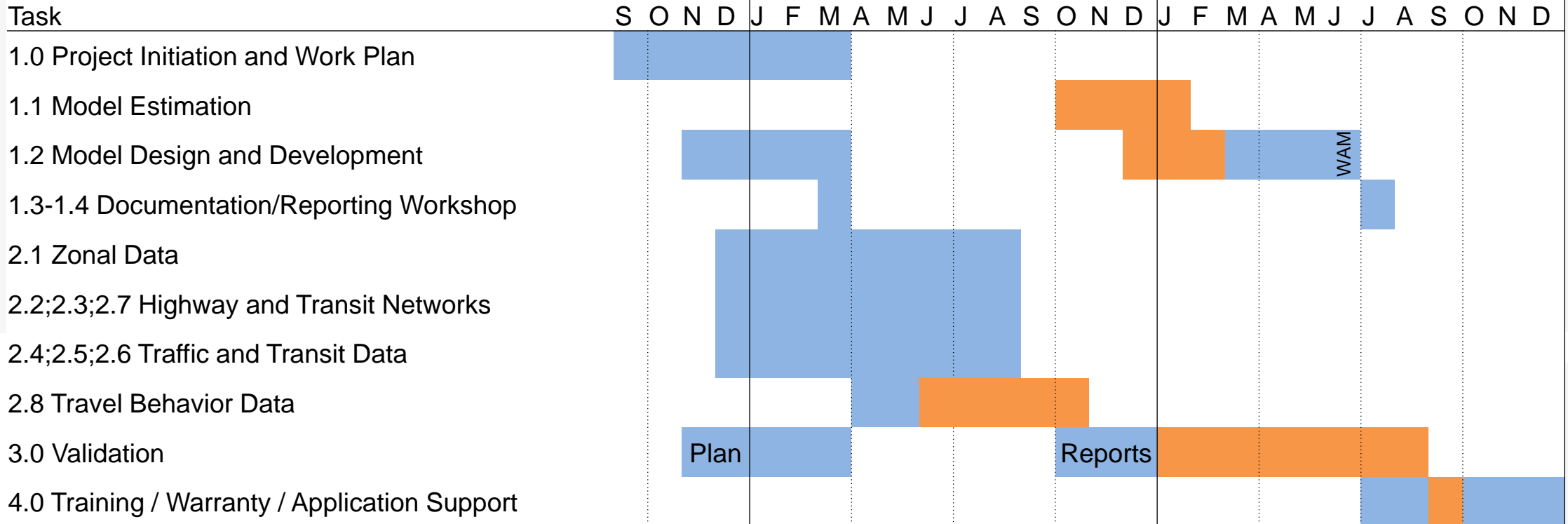
May 16, 2018

Outline

- Status overview
- Confirm base year networks and SE data completed
- Implementation status
- Validation status

Project schedule

SERPM 8.0 Project Plan



Critical Path

WAM: Windowed Area Model

Plan: validation plan development

Reports: validation reporting development

Version: 9/27/2017

Base year networks and SE data – latest revisions

➤ Miami-Dade

- » Added employment to single zone (no redistribution necessary)
- » *Pending parking cost review and updates

➤ Broward

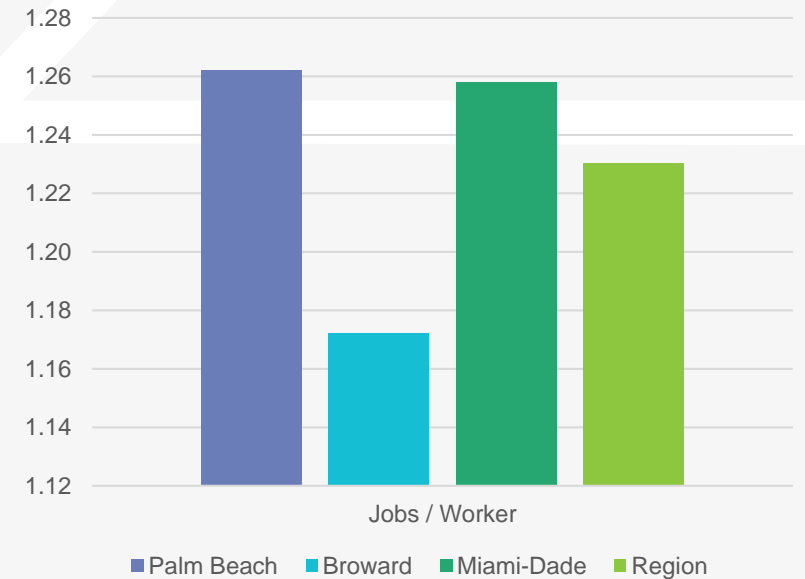
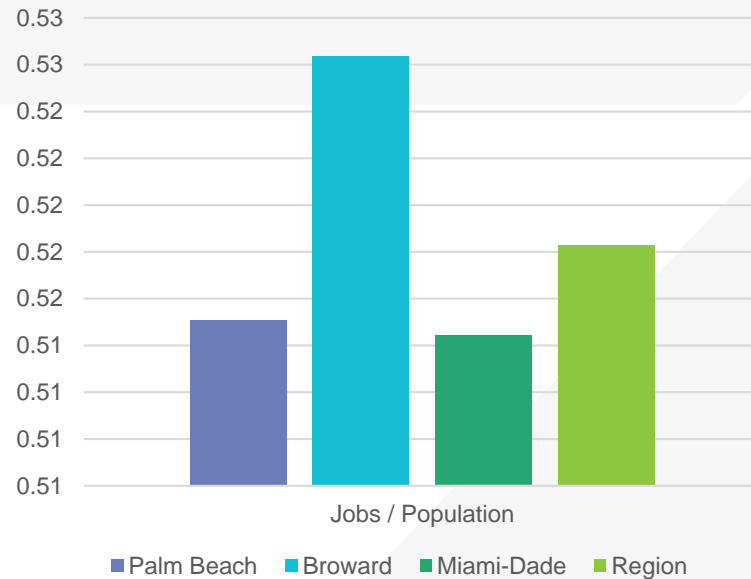
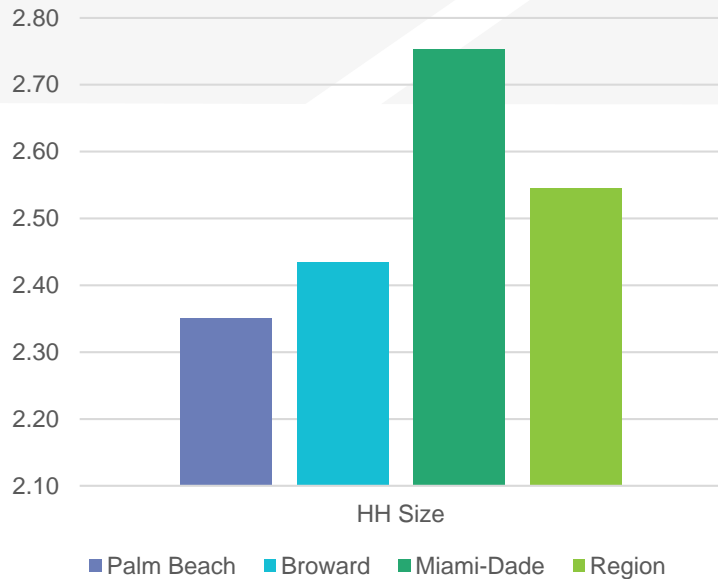
- » Redistributed HH and Population by segment in response to revised HH and Population targets from county
- » Revised and redistributed employment to adjust two zones.

➤ Palm Beach

- » No changes since last update.

SE Data Summary

County	Households	Population	Workers	Employment
Palm Beach	595,518	1,399,463	571,134	720,801
Broward	750,601	1,826,972	820,285	961,607
Miami-Dade	955,425	2,629,845	1,075,473	1,352,874
Region	2,301,544	5,856,280	2,466,892	3,035,282

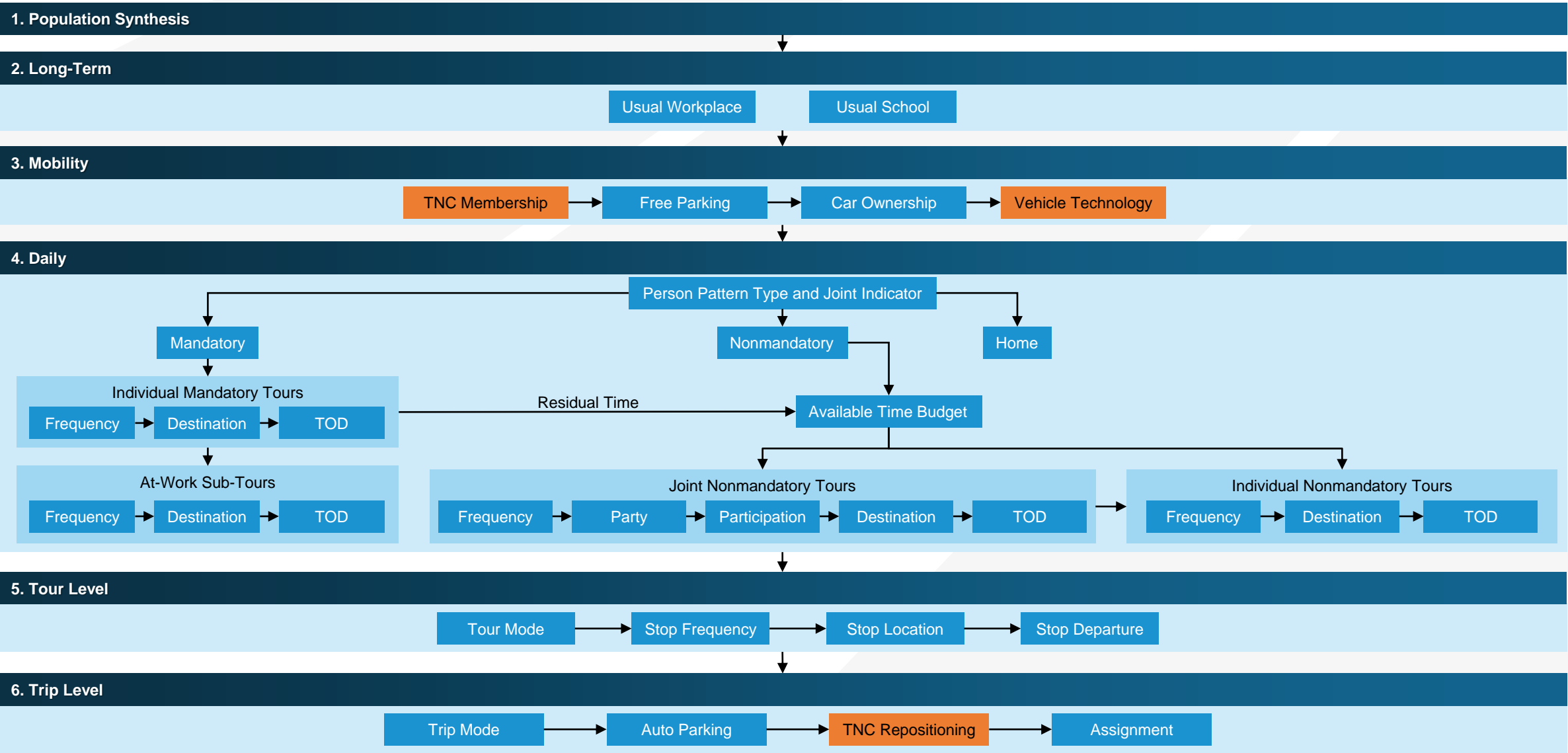


Input data update request management

- Revisions will be applied in a periodic “batch” fashion to maintain focus on implementation and validation
- Outstanding requests:
 - » Networks: none
 - » SE data: none
 - » Count data: Turnpike noted subset of 2015 counts are lower than 2010

Implementation status

- Catalog development
 - » Integrate transit and new components (cruiseport, TNC management)
 - » Clean-up and testing
- ABM functionality
 - » Restrict Auto-Egress TAPs to Tri-Rail and MetroRail
 - » Auto-restart on random error
- Reports
 - » HEVAL
 - » R-based summaries
- Draft catalog – end of May



Validation status

- Review high-level summary worksheet

Validation next steps

- Resolve issues based on SERPM7 comparisons
- Populate high-level sheet with observed data summaries
 - » ACS
 - » HH Survey
- Conduct detailed validation / calibration as necessary
- Assignment summaries
 - » Update/confirm screenline locations
 - » Streetlight data
 - » Transit data

Questions
