

The South Florida Resident Job Linkage (SFRJL) Reporting Tool

Gannett Fleming, Inc.

Southeast Florida FSUTMS User Group Meeting

June 13, 2014

Motivation

- ▶ Importance of Commuting Data
 - ▶ Travel demand management programs
 - ▶ Transit service planning
 - ▶ Travel demand forecasting
 - ▶ Community and economic development
- ▶ Census Data Products
 - ▶ Longitudinal Employer-Household Dynamics (LEHD)
 - ▶ Census Transportation Planning Product (CTPP) from American Community Survey (ACS)
 - ▶ 3-year average at county level with population > 20,000
 - ▶ 5-year average at TAZ level with more variables

Objectives of the SFRJL Reporting Tool

- ▶ Make LEHD/CTPP Simple and Easy-to-Use
- ▶ Focus on Cities/Census Designated Places (CDP) in Seven South Florida Counties
 - ▶ Indian River, St. Lucie, Martin (TCRPM area)
 - ▶ Palm Beach, Broward, Miami-Dade (SERPM area)
 - ▶ Monroe
- ▶ Display Data in Tabular and Graphic Format
- ▶ Export Reports in Different Formats

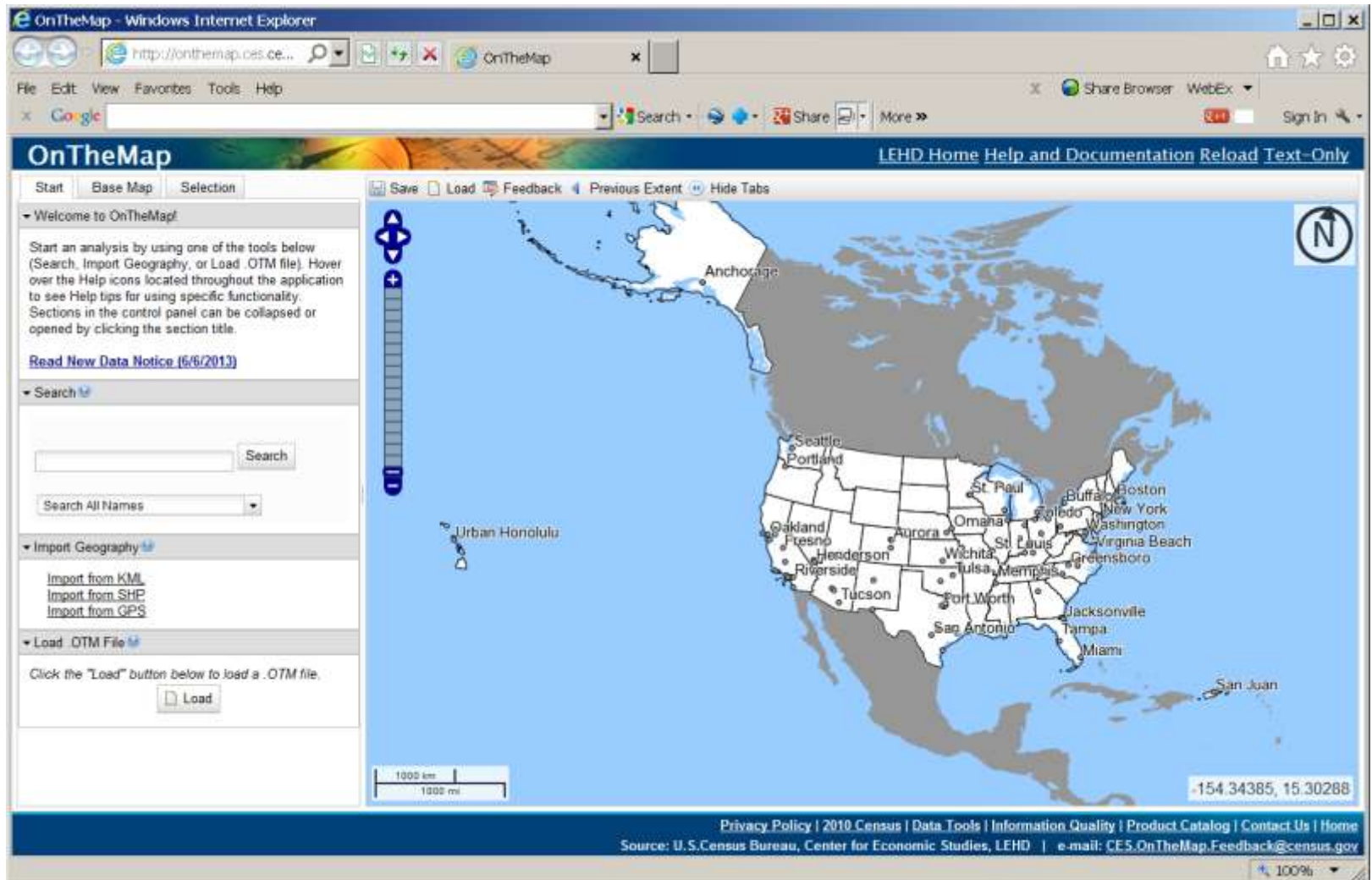
Longitudinal Employer-Household Dynamics

- ▶ A Program Conducted by the US Census Bureau
- ▶ Combines Three Major Data Sources
 - ▶ State – Unemployment Insurance (UI) earnings data
 - ▶ Individual wages and employment
 - ▶ Federal – Census Administrative Records
 - ▶ Demographic Information (age, gender, and place of residence)
 - ▶ Joint State and Bureau of Labor Statistics – ES 202/
Quarterly Census of Employment and Wages (QCEW)
 - ▶ Information on employers (e.g., industry, employment, revenues)
- ▶ Creates a Longitudinal (Annual) Linked Employer-Employee Dataset

LEHD Origin-Destination Data

- ▶ Residence Place
- ▶ Workplace
- ▶ Total Number of Jobs
 - ▶ Number of Jobs by Age Groups
 - ▶ 29 or younger; 30-54; 55 or older
 - ▶ Number of Jobs by Monthly Earning Groups
 - ▶ \$1250 or less; \$1250 to \$3333; \$3333 or more
 - ▶ Number of Jobs by Industry Sectors
 - ▶ Goods producing; Trade/Transportation/utilities; Other Services
- ▶ Available at Census Block Level from 2002 to 2011

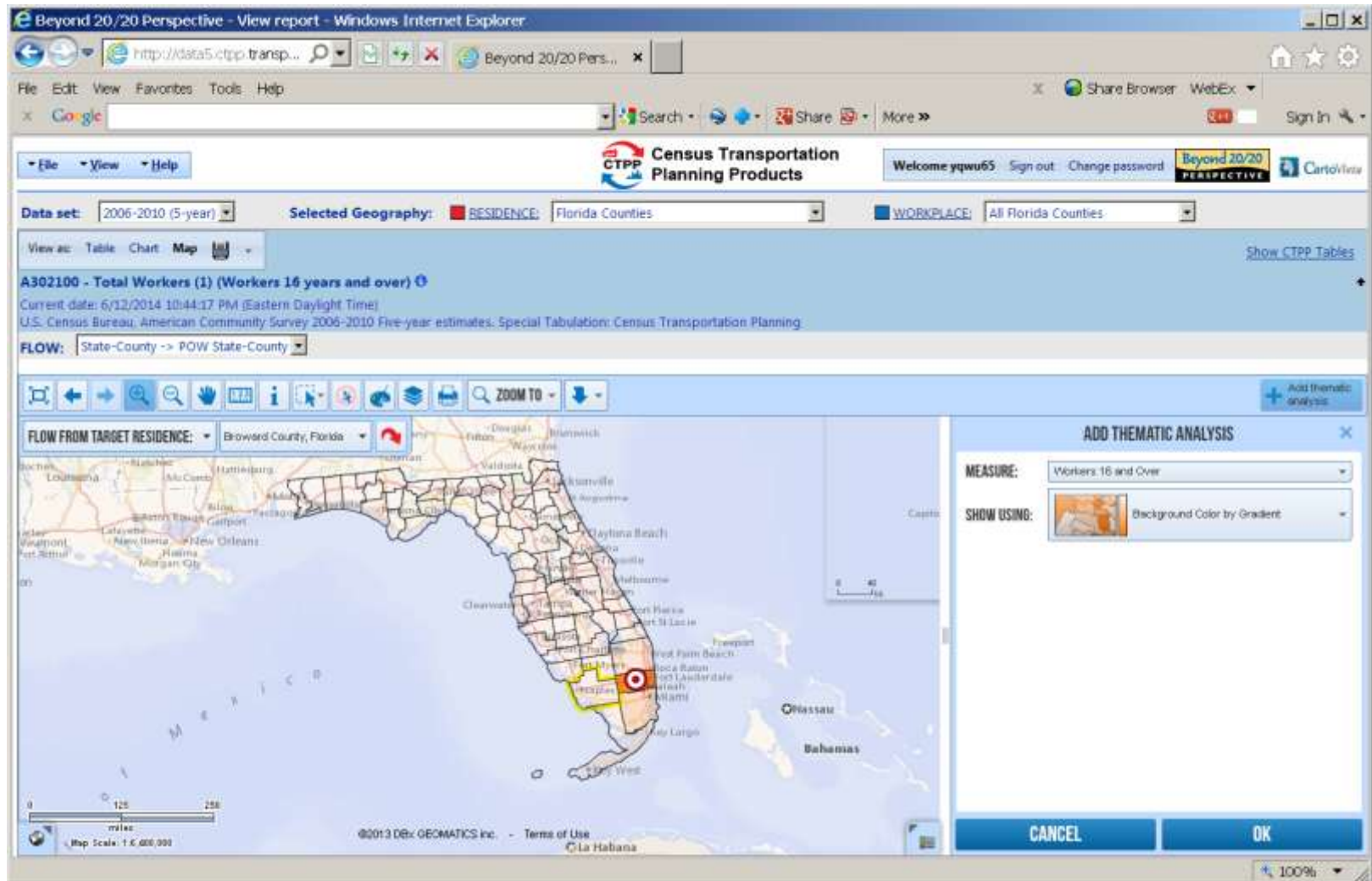
OnTheMap Online Tool



ACS/CTPP Data

- ▶ Based on American Community Survey (ACS)
- ▶ Five-year average (2006-2010)
- ▶ More variables available
 - ▶ Means of Transportation
 - ▶ Age Groups
 - ▶ Industry Sectors
 - ▶ Race
 - ▶ Time left for work
 - ▶ Travel time to work

ACS/CTPP Online Tool



The SFRJL Reporting Tool

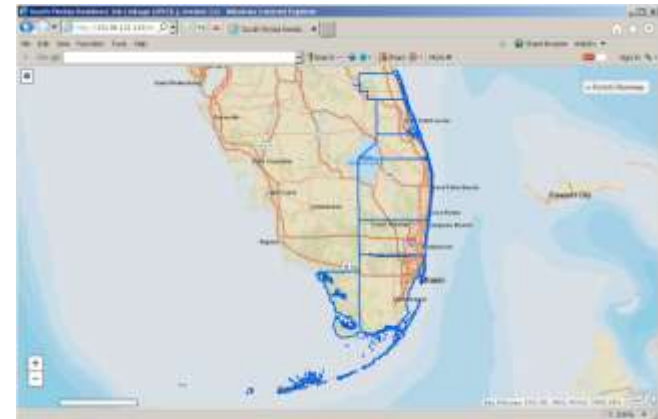
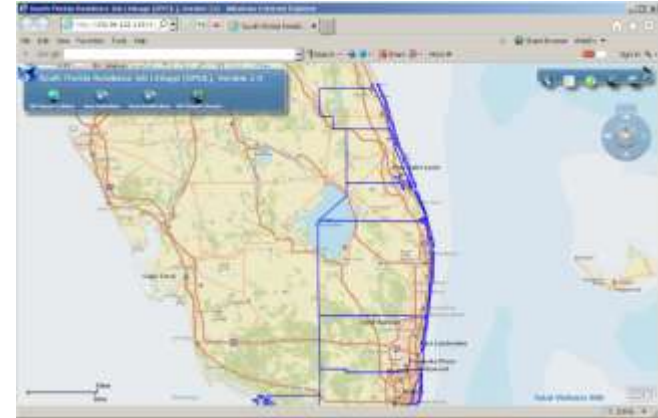
▶ Two Versions

▶ PC version

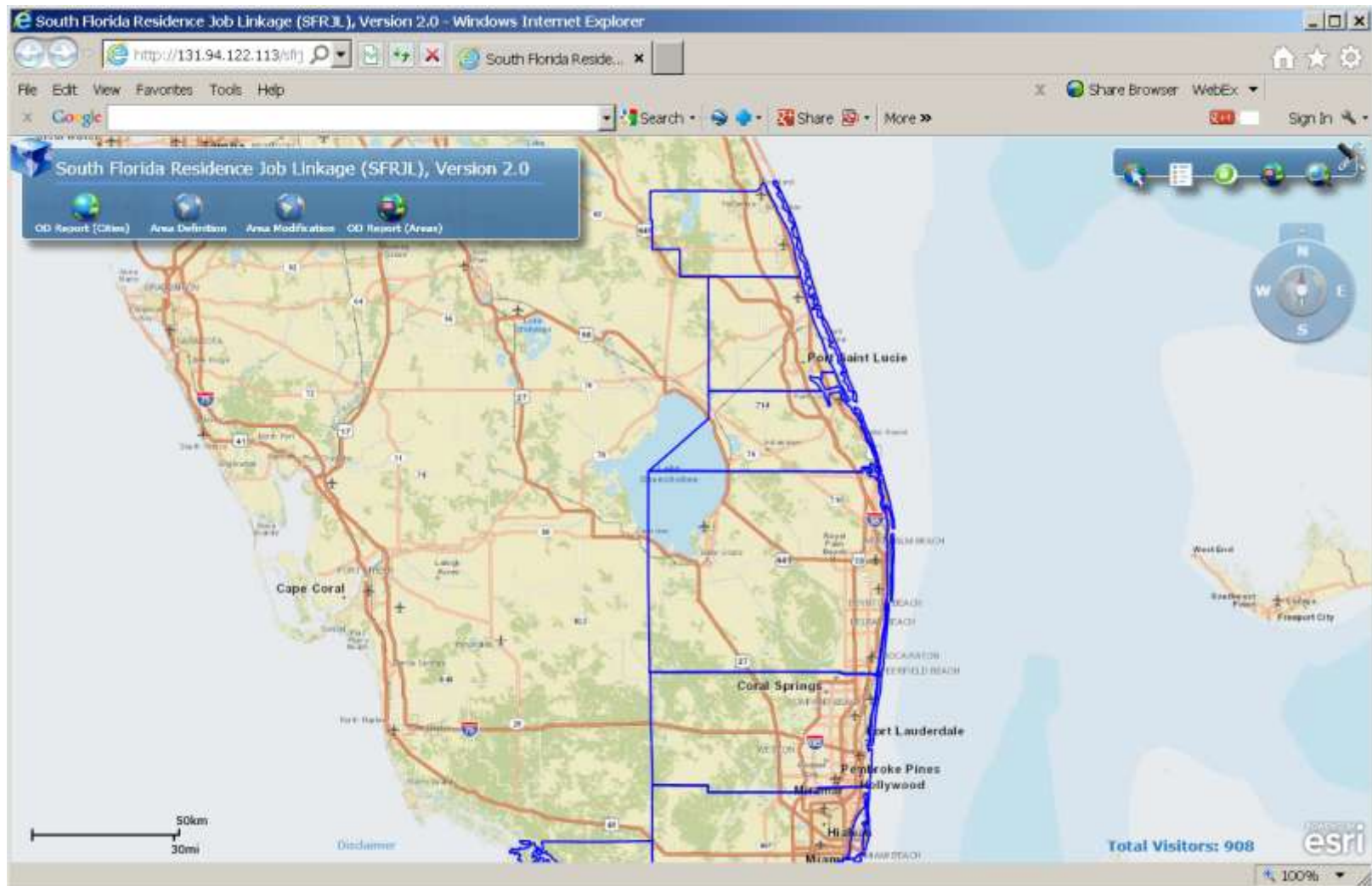
- ▶ Microsoft Silverlight
- ▶ Fast and Stable
- ▶ Only works on Windows PCs

▶ Mobile compatible version

- ▶ Under development
- ▶ All PC functions transferred
- ▶ Accessible across platforms
- ▶ ACS/CTPP integrated
- ▶ Slower



SFRJL – PC Version (<http://131.94.122.113/sfrjl>)



Five (5) Simple Steps

Step 1. Select a Year

Step 2. Select a Report Type

Step 3. Select an Origin

Step 4. Select a Destination

Step 5. Get the Report

The image shows a software dialog box titled "OD Report Query". It contains five input fields and one button, each highlighted by a red arrow pointing from a step label on the left. The fields are: "Select Year:" (a dropdown menu), "Select Report:" (a dropdown menu with the text "Select an OD report type:"), "From County:" (a text box), "From City:" (a text box), "To County:" (a text box), and "To City:" (a text box). The button at the bottom right is labeled "Create OD Report".

An Example

– From WPB to All Cities in PBC in 2011



OD Report Query

Select Year: 2011

Select Report: 2011

OD report type:

From County:

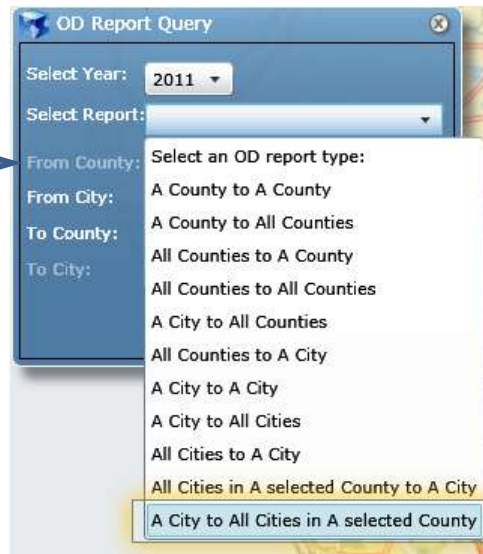
From City:

To County:

To City:

Create OD Report

Step 1. Select a Year



OD Report Query

Select Year: 2011

Select Report:

From County:

From City:

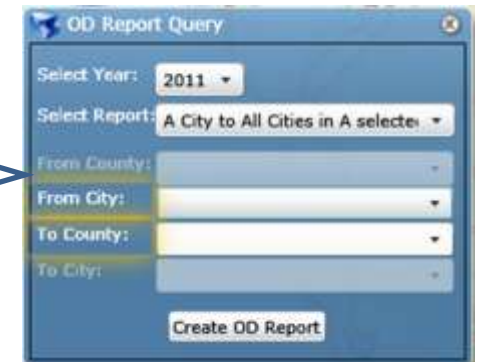
To County:

To City:

Create OD Report

- Select an OD report type:
- A County to A County
- A County to All Counties
- All Counties to A County
- All Counties to All Counties
- A City to All Counties
- All Counties to A City
- A City to A City
- A City to All Cities
- All Cities to A City
- All Cities in A selected County to A City
- A City to All Cities in A selected County

Step 2. Select a Report Type



OD Report Query

Select Year: 2011

Select Report: A City to All Cities in A selected County

From County:

From City:

To County:

To City:

Create OD Report

Note: Only "From City" and "To County" are Available

An Example (Cont'd)

– From WPB to All Cities in PBC in 2011

OD Report Query

Select Year: 2011

Select Report: A City to All Cities in A selecte

From County: Palm Beach

From City: West Palm Beach city, Palm Beach

To County: Palm Beach

To City:

Step 3. Select "From City"
"West Palm Beach City"

OD Report Query

Select Year: 2011

Select Report: A City to All Cities in A selecte

From County: Palm Beach

From City: West Palm Beach city, Palm Beach

To County: Palm Beach

To City:

Step 4. Select "To County"
(Palm Beach)

OD Report Query

Select Year: 2011

Select Report: A City to All Cities in A selecte

From County: Palm Beach

From City: West Palm Beach city, Palm Beach

To County: Palm Beach

To City:

Create OD Report

Step 5. Click "Create OD Report"

An Example (Cont'd)

– From WPB to All Cities in PBC in 2011

LEHD Report Viewer - Windows Internet Explorer

http://131.194.122.113/ReportCenter/Lehdt/ South Florida Resident... LEHD Report Viewer

File Edit View Favorites Tools Help

From Year: 2011 To Year: 2011

From City: West Palm Beach city, Palm Beach To County: Palm Beach

View Report

Note: Click up/down indicator for sorting, hold SHIFT key for multiple column sorting

Reports can be sorted by any column

To City	Year	Total number of jobs	# of jobs of workers age 29 or younger	# of jobs of workers age 30 to 54	# of jobs of workers age 55 or older	# of jobs with earnings <= \$1250/month	# of jobs with earnings \$1250/month to \$3333	# of jobs with earnings > \$3333	# of jobs in Goods Producing industry sectors	# of jobs in Trade, Transportation, and Utilities industry sectors	# of jobs in All Other services industry sectors
Sort	Sort	Sort	Sort	Sort	Sort	Sort	Sort	Sort	Sort	Sort	Sort
Acacia Villas CDP, Palm Beach	2011	4	2	2	0	0	3	1	0	0	4
Atlantis city, Palm Beach	2011	217	38	134	45	25	73	119	0	1	216
Bella Glade city, Palm Beach	2011	52	9	24	19	13	15	24	17	5	30
Boca Raton city, Palm Beach	2011	549	199	609	141	203	354	352	62	168	719
Boynton Beach city, Palm Beach	2011	802	226	448	128	260	345	197	59	195	548
Cabana Colony CDP, Palm Beach	2011	8	1	4	3	1	4	3	2	4	2
Delray Beach city, Palm Beach	2011	496	122	288	86	132	223	141	41	81	374
Glen Ridge town, Palm Beach	2011	2	0	1	1	1	1	0	0	0	2
Golf Village, Palm Beach	2011	15	1	12	2	3	10	2	0	3	12
Greenacres city, Palm Beach	2011	271	95	137	39	84	140	47	6	77	188
Gulf Stream town, Palm Beach	2011	9	3	5	1	6	1	2	0	0	9
Gun Club Estates CDP, Palm Beach	2011	1	0	1	0	0	1	0	0	0	1
Hawthill town, Palm Beach	2011	13	4	8	1	9	3	1	5	4	4
Highland Beach town, Palm Beach	2011	1	0	0	1	0	0	1	0	0	1
Hypokso town, Palm Beach	2011	42	11	28	3	26	12	4	3	1	38
Juno Beach town, Palm Beach	2011	209	43	142	24	12	48	149	2	57	150
Juno Ridge CDP, Palm Beach	2011	21	2	16	3	6	9	6	0	1	20
Jupiter Farms CDP, Palm Beach	2011	39	12	20	7	10	25	4	8	9	22
Jupiter town, Palm Beach	2011	848	211	569	128	190	434	216	53	119	676
Kenwood Estates CDP, Palm Beach	2011	5	1	3	1	2	3	0	0	1	4
Lake Clarke Shores town, Palm Beach	2011	70	24	36	10	38	27	5	3	1	66
Lake Park town, Palm Beach	2011	332	86	191	55	119	145	68	44	116	172
Lake Worth city, Palm Beach	2011	494	116	290	80	177	291	116	99	100	295

An Example (Cont'd)

– From WPB to All Cities in PBC in 2011

LEHD Report Viewer - Windows Internet Explorer

http://131.94.122.113/ReportCenter/Lehd/ South Florida Resident... LEHD Report Viewer

File Edit View Favorites Tools Help

From Year: 2011 To Year: 2011

From City: West Palm Beach city, Palm Beach To County: Palm Beach

View Report

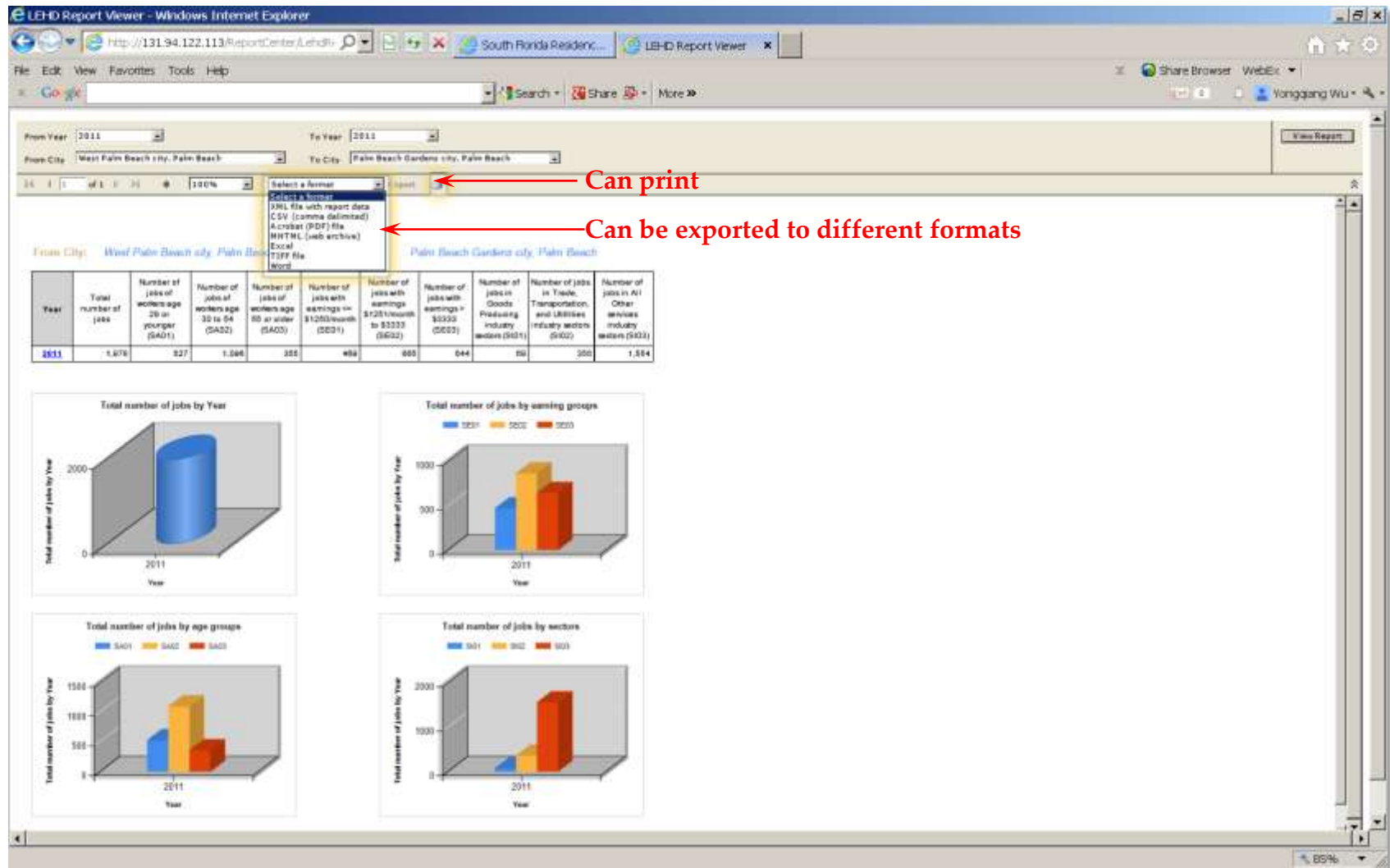
Note: Click up/down indicator for sorting, hold SHIFT key for multiple column sorting

Drill down to see more details

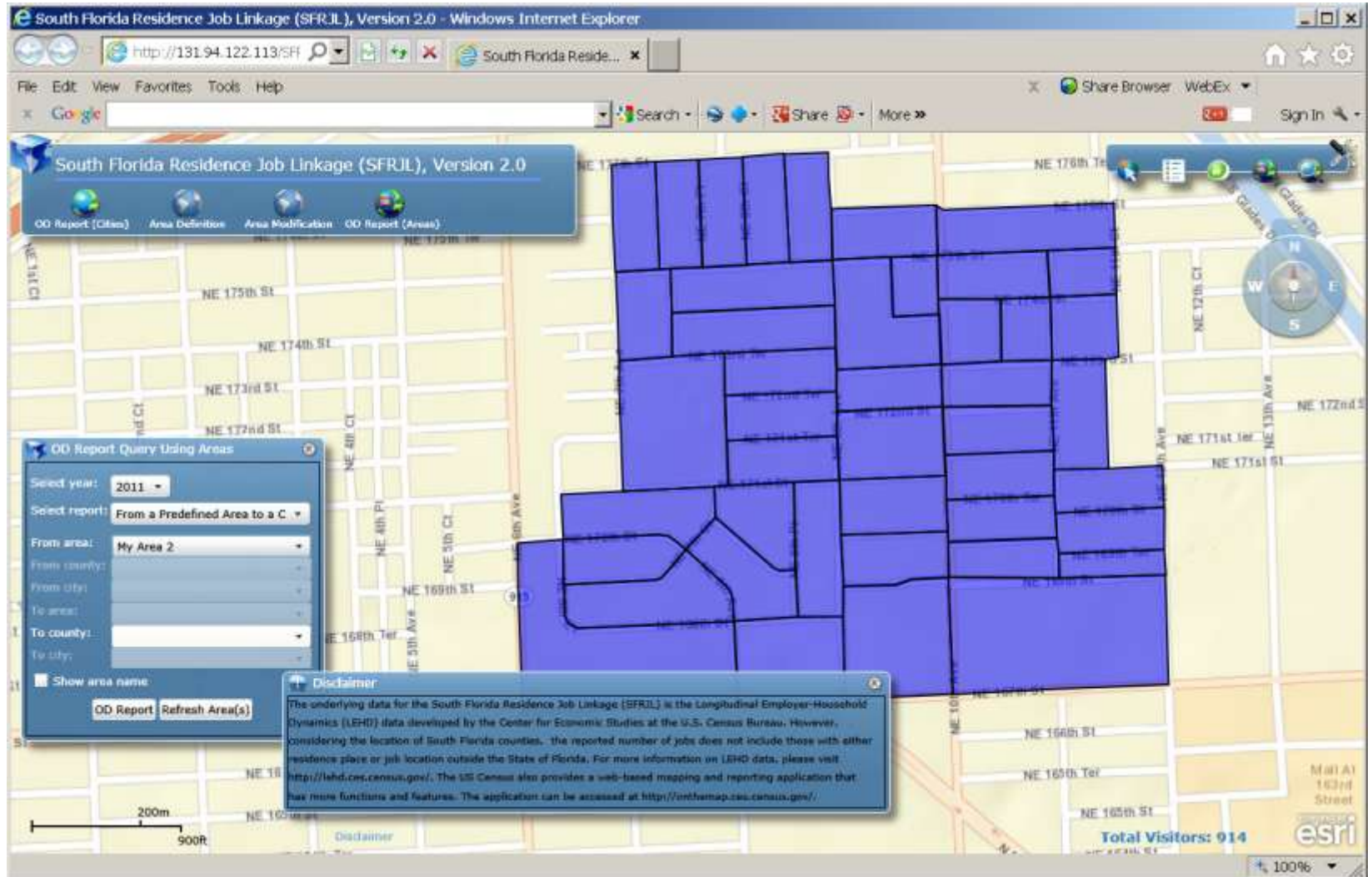
To City	Year	Total number of jobs	# of jobs of workers age 25 or younger	# of jobs of workers age 30 to 54	# of jobs of workers age 55 or older	# of jobs with earnings <= \$1250/month to \$3333	# of jobs with earnings > \$3333	# of jobs in Goods Producing industry sectors	# of jobs in Trade, Transportation, and utilities industry sectors	# of jobs in All other services industry sectors
Sort ↓	Sort ↓	Sort ↑	Sort ↓	Sort ↓	Sort ↓	Sort ↓	Sort ↓	Sort ↓	Sort ↓	Sort ↓
Others (Outside Palm Beach)	2011	13,457	3,721	7,341	2,395	4,137	5,256	4,064	1,121	4,231
West Palm Beach city, Palm Beach	2011	9,277	1,833	5,386	2,058	2,017	3,806	3,454	441	1,031
Others (Inside Palm Beach)	2011	4,470	976	2,590	896	1,143	1,815	1,512	516	804
Palm Springs village, Palm Beach	2011	2,114	339	1,201	574	388	620	1,106	13	61
Palm Beach Gardens city, Palm Beach	2011	1,978	527	1,096	355	469	866	644	69	355
Palm Beach town, Palm Beach	2011	1,826	387	948	491	307	830	688	27	216
Boca Raton city, Palm Beach	2011	1,522	306	913	383	242	683	597	203	337
Boca Raton city, Palm Beach	2011	949	199	609	141	283	354	392	62	168
Jupiter town, Palm Beach	2011	848	211	509	128	190	434	216	53	119
Boynton Beach city, Palm Beach	2011	802	226	448	120	260	345	197	59	195
Wellington village, Palm Beach	2011	655	218	343	94	190	326	138	52	157
Delray Beach city, Palm Beach	2011	496	122	288	86	132	223	141	41	81
Lake Worth city, Palm Beach	2011	494	116	290	88	177	291	116	99	100
Royal Palm Beach village, Palm Beach	2011	406	133	221	52	155	170	81	21	140
Westgate CDP, Palm Beach	2011	359	93	184	82	172	124	63	6	124
Lake Park town, Palm Beach	2011	332	86	191	55	119	145	68	44	116
Margonia Park town, Palm Beach	2011	314	62	164	88	113	149	52	72	27
North Palm Beach village, Palm Beach	2011	310	61	176	73	69	154	87	23	19
Greenacres city, Palm Beach	2011	271	95	137	39	84	140	47	6	77
Atlantic city, Palm Beach	2011	217	38	134	45	25	73	119	0	1
Juno Beach town, Palm Beach	2011	209	43	142	24	12	48	149	2	57
Lantana town, Palm Beach	2011	165	40	100	25	42	78	45	11	43
The Acreage CDP, Palm Beach	2011	97	24	55	18	27	41	29	28	18

An Example (Cont'd)

– From WPB to All Cities in PBC in 2011

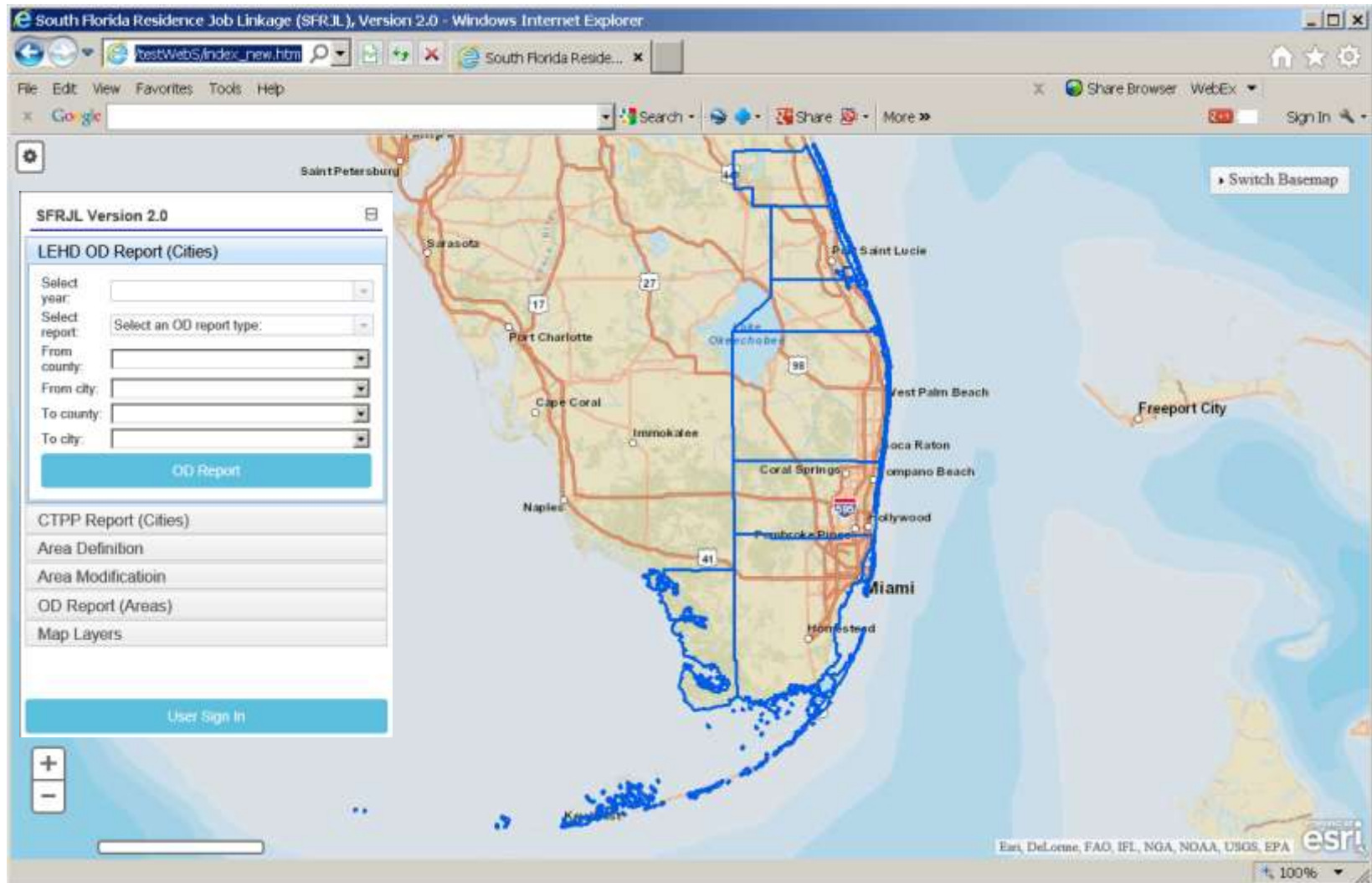


OD Reports for User Defined Areas



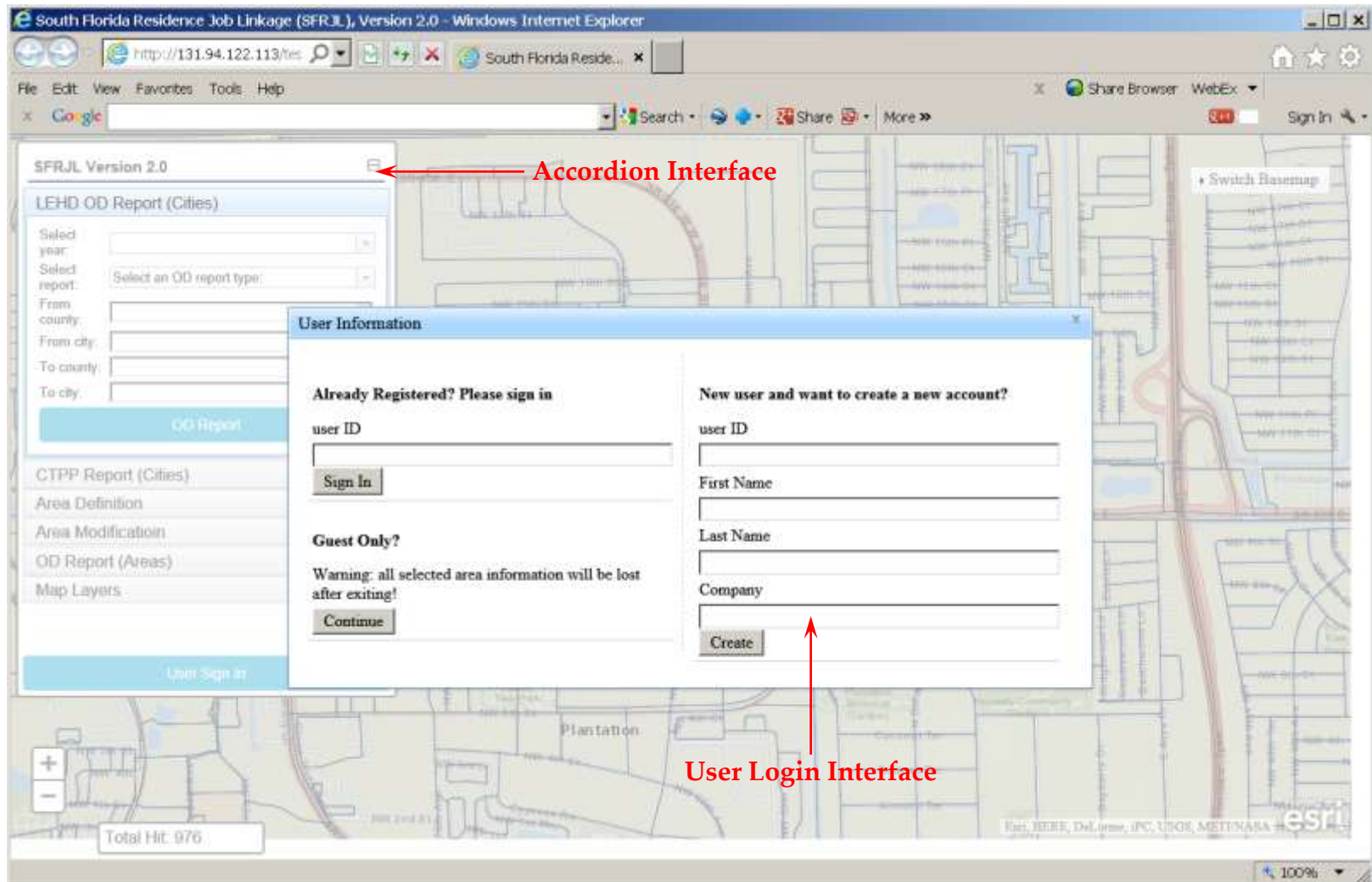
SFRJL – Mobile Compatible Version

(http://131.94.122.113/testWebS/index_new.htm)

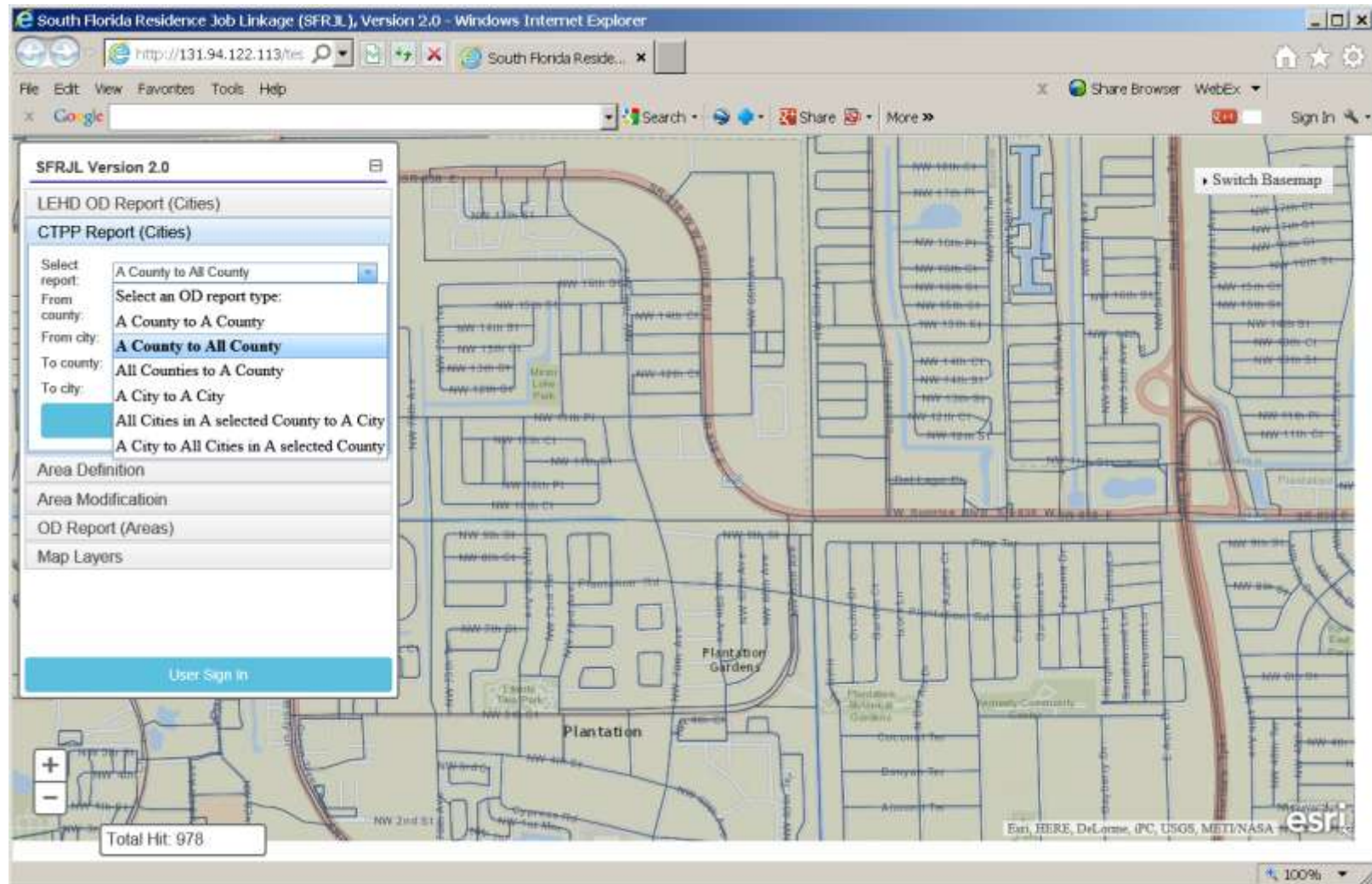


SFRJL – Mobile Compatible Version

Accordion Menu and User Login Interface

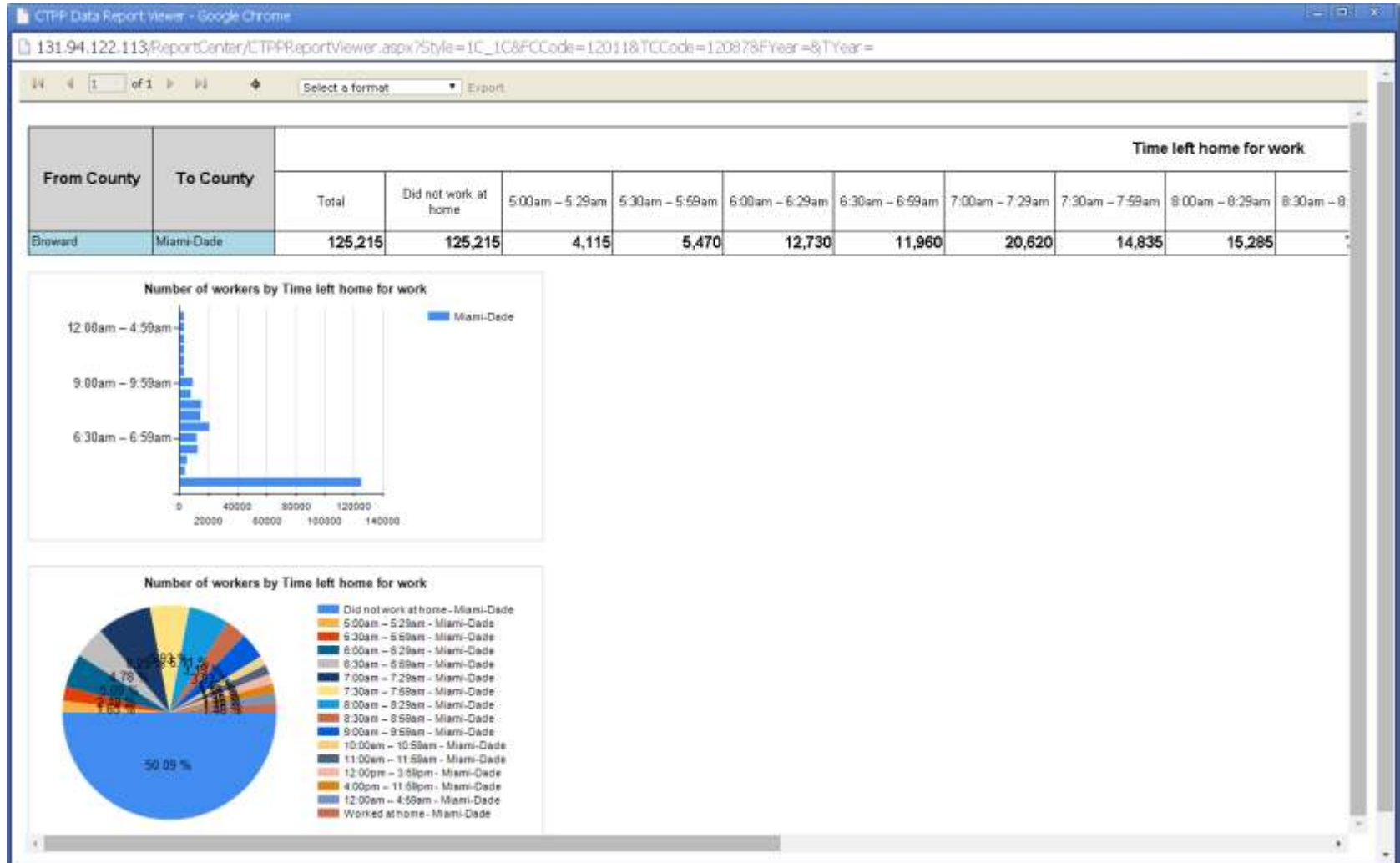


SFRJL – Mobile Compatible Version (ACS/CTPP Predefined Reports)



SFRJL – Mobile Compatible Version

(ACS/CTPP Predefined Reports)



Questions and Comments

Shi-Chiang Li, AICP

Florida Department of Transportation, District 4

Phone: 954-777-4655

Email: Shi-Chiang.Li@dot.state.fl.us

Yongqiang Wu, P.E.

Gannett Fleming, Inc.

Phone: 561-285-1575

Email: ywu@gfnet.com