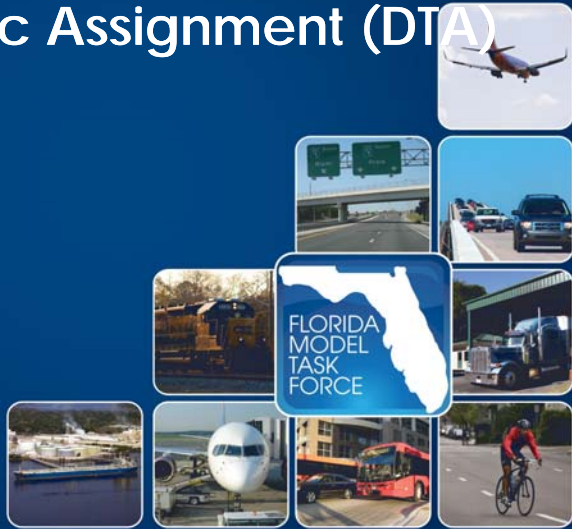


Advanced Traffic Assignment (ATA) Sub-committee Activities and Dynamic Traffic Assignment (DTA) Training

presented to
MTF

presented by
Neelam Fatima

Date: June 17, 2013



ATA Members

Advanced Traffic Assignment Subcommittee

Chair: Neelam Fatima

Vice-Chair: Jack Klodzinski

Model Advancement Committee Chair: Wilson Fernandez

No.	Name	Agency/Company	Email Address
1	Neelam Fatima	DOT, South TPO	fatima@dot.state.fl.us
2	Jack Klodzinski	Florida Turnpike	jack.klodzinski@dot.state.fl.us
3	Wilson Fernandez	Miami-Dade MPO	wfern@miamidade.gov
4	William Hensler	Leidos Consulting Engineers	whensler@leidos.com
5	Betty McKea	FDOT District 5	betty.mckea@dot.state.fl.us
6	Chunyu Lu	RISH	Chunyu.Lu@rishndh.com
7	David Ross	URS	david.ross@urs.com
8	Fadi Nassar	ATEC	fnassar@atetech.com
9	Fang Mei	RISH	fang.mei@rishndh.com
10	Rowland Stabin	Orlando University	rstabin@rowland.com
11	Rowland Stabin	Caliper Corporation	rowland@caliper.com
12	Jeanette Berk	Advanced Planning, Inc	jeanette@advancedplanning.com
13	Robert Cooper	CDM Smith	robert.cooper@cdmsmith.com
14	Michael Donoherty	URS	mdonoherty@urs.com
15	Wing Yang Li	FDOT District 4	wli@dot.state.fl.us
16	Diya Marcondes	Lake-County MPO	diya.marcondes@lakecountympo.com
17	Reema Basakrishna	Caliper Corporation	reema@caliper.com
18	Robt. Miquel	Centropage Systematics	rmiquel@centropage.com
19	Robert Miquel	CDM Smith	rmiquel@cdmsmith.com
20	Sharon Lewis	Lake County	sharon@lakecountyfl.gov
21	Shirley Velez	The Corvidio Group	shirley@corvidio.com
22	Stephan Lewis	Resource Systems Group	slewis@rsg.com
23	Luigi Tassinari	BCC Engineering	luigi@bcca.com
24	Thomas Hill	FDOT District 2	thomas.hill@dot.state.fl.us
25	Yafeng Yin	University of Florida	yinyf@ufl.edu
26	Yew Song	Florida Turnpike	yew.song@dot.state.fl.us

Friends of the Committee

No.	Name	Agency/Company	Email Address
1	Colby Brown	CDM	cbrown@cdm.com
2	Vijay Mysore	FDOT Central Office	vijay.mysore@dot.state.fl.us
3	Bin Jin	Florida International University	binjin@fiu.edu

Researchers, Consultants and Supporting Staff

No.	Name	Agency/Company	Email Address
1	Ran Moses	Florida A&M University-FSU	rmoses@fsu.edu
2	Adrian Kucharski	PB Americas	adrian.kucharski@pb.com
3	Herbert McQueen	PB Americas	herbert.mcqueen@pb.com
4	Jim Hicks	PB Americas	jimhicks@pb.com
5	Gerardo Pappas	PB Americas	gerardo.pappas@pb.com
6	David Rupp	PB Americas	david.rupp@pb.com
7	Muhammad Hazi	Florida International University	hazi@fiu.edu
8	Jim Farnsworth	Fernova Associates	jim.farnsworth@fernova.com
9	Frederick Duque	University of Maryland	frederick@umd.edu
10	Heesoo Han	CDM	heesoo@cdm.com
11	Chris Takahashi	FDOT Central Office	christak@dot.state.fl.us
12	Madeline Maguire	FDOT Central Office	madeline.maguire@dot.state.fl.us

List updated on October 2, 2012



Accomplishments



- DTA Research Project
- Workshop on DTA
- Development of ISSTA
- Managed Lane Phase I
- Managed Lane phase II
- Volume Delay Function
- Resolution on DTA support & Training
- Proposal for DTA Training-underway



ATA Activities



On-Going Projects

- Managed Lane-Phase 2
- Volume Delay Function Project
- Dynamic Traffic Assignment Training



ATA Support on DTA



- The Advanced Traffic Assignment (ATA) sub-committee has identified that
- Dynamic Traffic Assignment (DTA) models address transportation issues that may fall beyond the scope of traditional static assignment procedures.



DTA Need



- DTA models capture travel behavior through travel behavior models that are sensitive to the policy variables of interest such as capacity, pricing and information systems;



Need for Training



- There is a need to provide training on DTA applications and its uses. The need for training was identified in the survey taken at the Model Task Force (MTF) meeting in 2010.



DTA Resolution



- Dynamic Traffic Assignment (DTA) Resolution December, 2012.
- Support and use of DTA procedures in conjunction with static modeling
- The Resolution endorsed a training program on DTA application & implementation.



Next Steps



- Input from ATA members
- Materials & content
- Locations
- Dissemination of information
- ATA will continue to play an active role in support of DTA



Questions or Comments

