

The logo graphic consists of several overlapping, slanted rectangular shapes in shades of green, blue, and purple, arranged in a way that suggests movement or a stylized 'C' or 'S' shape.

CAMBRIDGE
SYSTEMATICS

Think  Forward

SERPM 8 Model Status

presented to
RTTAC-MS

presented by
Cambridge Systematics, Inc.
Marty Milkovits, Tom Rossi

November 20, 2019

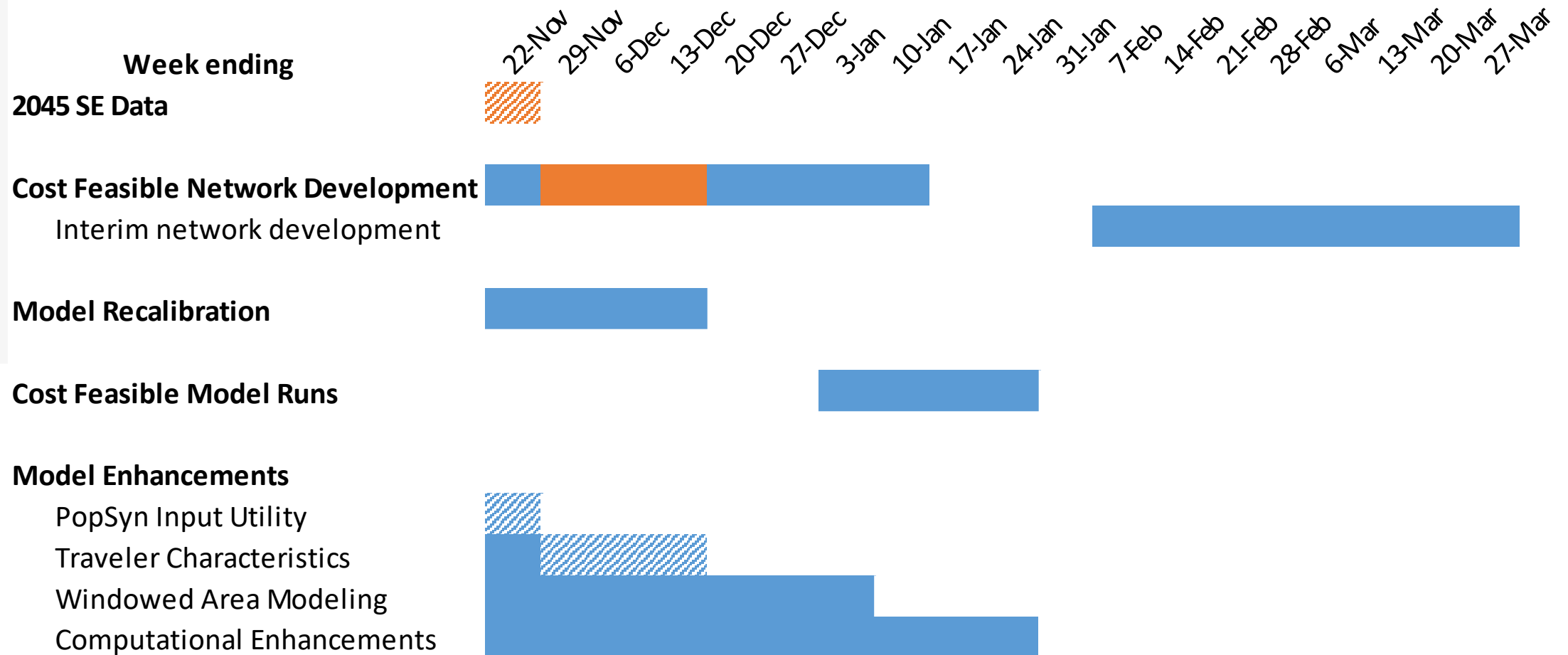
Outline

- Model status and schedule
- 2045 SE data update
- Model calibration update
- Traveler characteristics update

Model Status

- Latest model version released for use - January 30, 2019
- Developer version enhancements completed
 - » **Fixes:** TNC repositioning trip mechanism, shadow pricing enhancements, select link volumes, MAZ to TAZ map corrected (TAZ 4404)
 - » **Reports:** SE Data; PopSyn; TNC & C/AV summaries; [worker-job / student-enrollment consistency](#)
 - » **Utilities:** seed skim generation; free-flow network; voyager.exe check; PopSyn checker; site impact preparation
 - » **Catalog:** Default to utilize all threads in Cube Catalog, scenario key defaults; key names; [shadow pricing inputs](#)
 - » **Inputs:** highway network updated with D6 feedback and removed unused fields, [clean up floating nodes?](#)
 - » **Documentation:** [PopSyn utility](#); [Shadow Pricing guidance](#)
- Pending enhancements
 - » Update JPPF (to utilize all processors on Windows 10 systems)
 - » Airport employment handled within model
 - » Run time enhancements
 - » Windowed area modeling
- Model release schedule:
 - » Draft Final Model to RTTAC-MS January 9, 2020
 - » Ready documentation January 27, 2020
 - » Target Adoption Availability: February 1, 2020
- Bi-weekly maintenance calls
 - » Next call Monday November 25, 3 - 3:45pm

Model Work Schedule



2045 SE data update

Summary – version 20191105

- Palm Beach: updates to household and population
 - Broward: updates to CBD and FLL employment
 - Miami-Dade: updates to employment
-
- Question: are all known updates included and issues addressed in the current version of the land use data?

We are requesting approval of the land use inputs

2015 Calibration Update

SERPM 8 Revalidation

- Run model with changes since base year model accepted
 - » Updated socioeconomic data
 - » Various network fixes
 - » Changes to shadow price process
- Validation checks
 - » Demand component checks – comparisons to previous results and to observed data
 - » Assignment checks
 - Aggregate checks (VMT by segment, screenlines, etc.)
 - Individual link checks, including links cited in previous comments
- Review comments on original validation report

Demand Component Checks

- Nearly all component outputs match previous scenario results very closely (within 1%, usually much less)
- A few components show some segments with higher differences, but these are all small segments
- Bottom line: The trip tables are very similar to those from the previous base year scenario results—it is likely that no further adjustments needed on the demand side

Link Volume Checks

- Focused on links with previously identified issues
 - » But also checking other “outliers”
- Some issues may be addressed through network fixes
- But many will not, and demand side changes probably will not substantially change most modeled link volumes
- Focus on making sure that nothing has gotten worse

Next steps

- Summarize demand component checks
- SERPM 8 implementation
 - » ABM software
 - » Cube catalog
- Revise report

Scheduled completion: December 15

Traveler Characteristics Update

Traveler Characteristics Utility

- Connect highway and transit assignment (aggregate) results to ABM disaggregate outputs
- Process
 - » Define select link
 - » Run assignment-only (or full model)
 - » Analyze trips on OD-pairs identified through Select Link
- Questions
 - » Report set reasonable?
 - » Transit select link operation and reporting

Current Transit Path Logging Process

➤ Configuration

- » Catalog keys from SERPM 7 identify Transit-Access Point (TAP) origin and TAP destination for path logging

➤ Produces

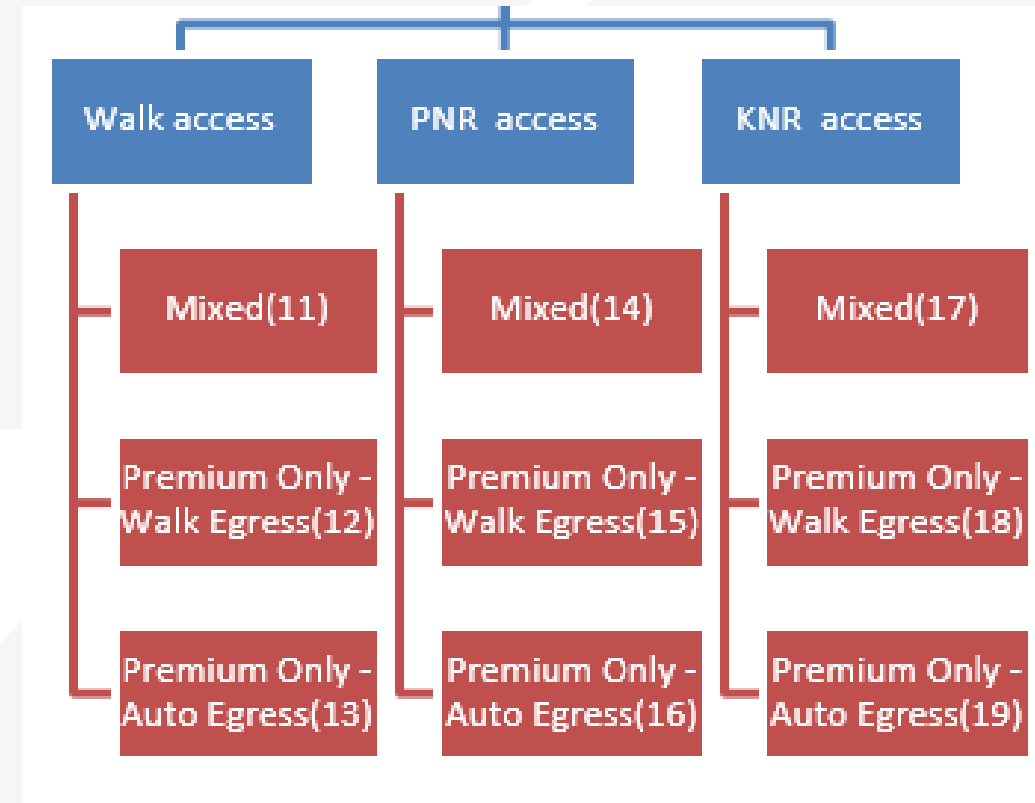
- » TAP-TAP route information by time of day (AM, PM, OP) and premium-only / mixed mode

➤ Question

- » Usefulness by typical modeler? Move keys to later pages.

Current Transit Select Link Operation

- Configuration
 - » Scripts are hard coded to generate select link on Tri-Rail (mode = 11)
- Produces
 - » TAP-TAP trip table by time of day (AM, PM, OP) and mode
- Question
 - » Interest in setting transit select link in scenario keys?



Select Link Options

➤ Select Link Capabilities

- » Highway network identifier: Links (node sequence) or individual node
- » Transit attribute: mode, operator, line (route)
- » Movement: through trips, boarding, alighting, non-transit through trip
- » Combinations of above

➤ Implementation Options

- » Free form text box – full flexibility to specify selection
- » Semi-flexible, single approach: drop-down menu to choose type of selection; text box with entries
- » Simple predetermined selection (e.g. mode only)

Next Steps

- Finalize report structure
- Develop transit select link capabilities
- Integrate R-scripts into Catalog to be run when Select Link is chosen